

**ASTATE HORTICULTURE  
PROGRAM SPRING 2017  
PLANT SALE**

**Thursday, 4-6-17 -- 12 - 5:30 pm**

**Friday, 4-7-17 -- 12 - 2 pm**

**Annuals**

# Angelonia – Summer Snapdragon

Serenita Mix



Sun



Blooms all summer  
Full sun  
Hot and dry

Dr. Pittcock Favorite!!

# Begonia – Coctail Red, Coctail White

Partial  
Shade



Blooms all summer  
Partial shade preferred  
Bronze leaves  
White or red flowers

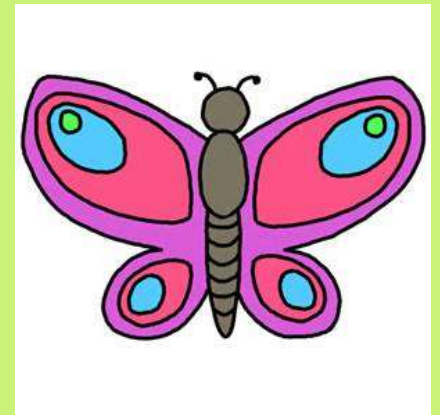
# Butterflyweed - Tropical



Full sun

2-3' tall

Butterfly magnet!!





# Coleus – Full Sun!!

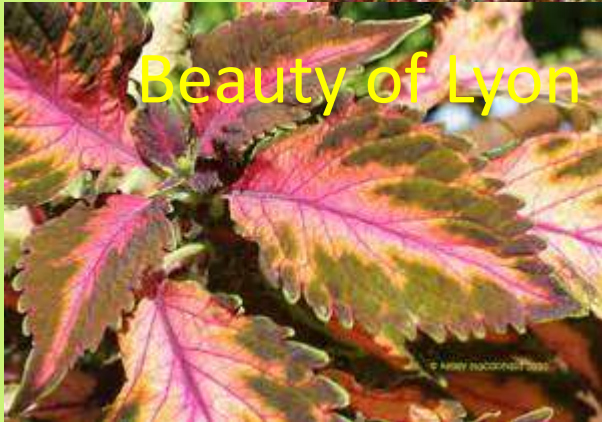
Sun



Trailing Pink



Pink Ruffle



Beauty of Lyon

- ‘Trailing Pink’, ‘Pink Ruffle’, ‘Beauty of Lyons’
- Annual
- Grows 24”+ tall and wide

# Coleus – Wizard mix (Shade)

Partial  
Shade

Shade



- Annual
- Multi-colored foliage
- 12' tall
  - (pinch off flowers)

# Cuphea llavea - 'Srirachia' series Summer Snapdragon



Annual, Full sun

Violet or Pink flowers

Flowers late spring to fall

Plant 12-18" tall

Reseeds!

**Dr. Pittcock Favorite!!**



# Dahlia 'Fireworks'

Sun



Striped blooms in a wide array of bright, vivid colors

Height of 16"

Blooms throughout summer and into the fall.

Can dig tubers to replant for next year

# Geranium



- Red
- 5-6" red flower heads
- Partial shade (morning sun)
- 12" tall plants

Partial  
Shade

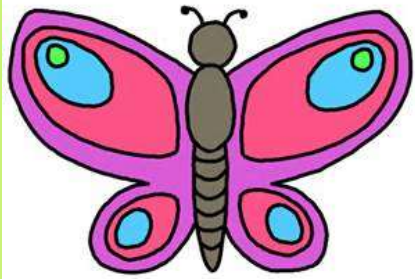
# Hyacinth Bean



Sun

- Vine grows to 10' tall with support
- Light purple flower from spring to fall
- Produces edible purple pod

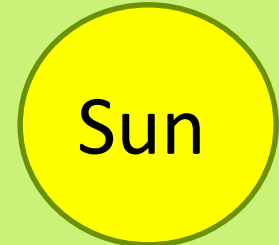




# Lantana



*Lantana camara 'Irene'*



- Full sun
- Ht 6"-24"
- Tough plant
- Will tolerate drought when established
- Many colors ('Dallas Red', 'New Gold', 'Fantasy', 'Knee High Gold'; red & orange)
- Butterflies love it!!



# Marigold 'Safari Mix'

Sun



- 10-12" tall, 6-8" wide
- Blooms all summer  
(pinch flowers after blooming)
- Flower Colors: gold, orange, bronze, yellow

# Mealy Sage, Mexican Sage – Salvia leucantha

Sun

Dr. Pittcock Favorite!!

- 24-48" tall and wide
- Blooms Fall
- Great plant for Fall color
- Purple/white or purple/purple velvety flowers
- **Butterflies love it!!**



# Melampodium 'Derby' -

Sun

Partial  
Shade



- 8" tall plants, 8" wide
- Creamy yellow flower
- Flowers all summer

# Mexican Heather

Sun



- Annual (semi-perennial)
- Purple or dark purple flowers
- 8"-12" tall (12-18" wide)



# Moss Rose - Portulaca



Sun

- Full sun
- 4" tall, 12" wide
- 2" flowers, mixed colors
- Loves hot and dry sites

# Nicotiana 'Perfume Mix' – Flowering Tobacco

Sun



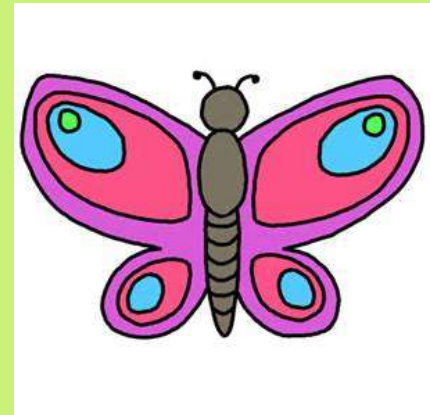
- 8"-12" tall, 8" wide
- Good for hot, dry sites
- Flowers all summer

# Pentas - Red

Sun



- 12-18" tall and wide
- Butterflies and hummingbirds love it
- Loves the heat



# Ornamental Pepper – Chilly Chilli



Sun

Very heat tolerant

- Ht 12" - spread 6-10"
- Mild 2" peppers change from yellow to orange to red as they age

**Dr. Pittcock Favorite!!**



# Ornamental Pepper – Black Olive

Sun



- Loves hot and dry
- Purple round fruits when mature
- 8-15" tall plant

# Petunia (Wave Series)

Sun

- flowers, 2-3"
- Ht 4", spread 2+'



Red Wave



Blackberry

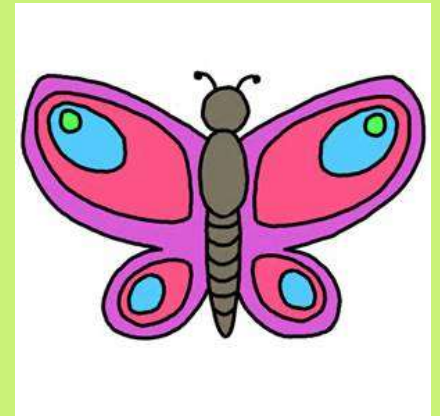


Easy Wave White

# Salvia 'Hotline Red'



- 12-14" tall
- Summer Flowers
- **Hummingbirds and butterflies love it**

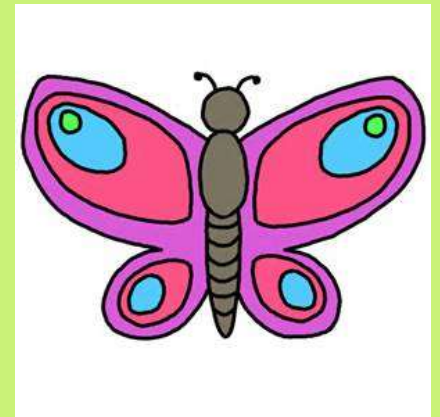


# Salvia 'Summer Jewel White'

Sun

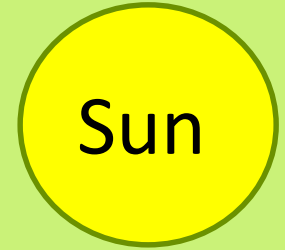
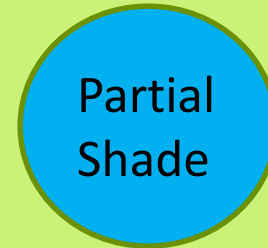


- 12-14" tall
- Summer Flowers
- **Hummingbirds and butterflies love it**





# SunPatiens



- Annual
- Full sun to partial shade
- 18-36" tall, 24-36" wide
- Heat/humidity tolerant
- No downy mildew
- Spreads quickly (good for transplanting into hanging baskets)

# Sweet Potato Vines

Sun



- 'Chartreuse' = green
- 'Blackie' = dk purple
- 'Tricolor' = green/pur/white
- Grows to at least 5'x5' area

# Vinca - Periwinkle

Jams N Jelly Blackberry



Mediterranean mix



Sun

Full sun

Drought tolerant

Low quantity of fertilizer

Loves the heat!



# Zinnia

Sun



Profusion Dbl Fire



Sunburst mix

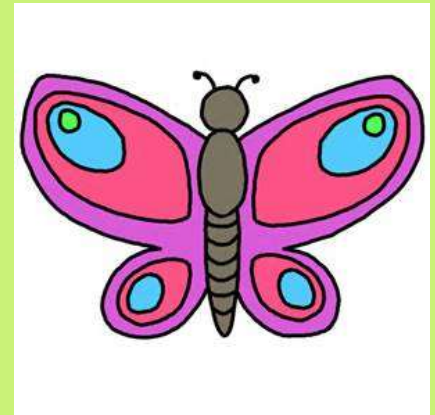


Profusion 3 color



Crystal Mix

- 'Magellan Sunburst Mix'
- Profusion Double Fire
- Profusion 3 color hybrid
- Crystal Mix
- **Butterflies love it!!**





# Ornamental Grasses

# Muhly Grass 'White Cloud' – White Muhly Grass

Sun



Dr. Pittcock's Newest Favorite!!

- Newest grass on the market
- White billowy flower heads from mid-Sept to hard frost
- 3-4' wide and ht
- Perennial
- Drought tolerance
- Would be stunning paired with purple muhly grass

# Lemon Grass

Sun



- Lemony aroma to foliage (used for cooking)
- Non-flowering grass
- 3-4' tall and wide
- Annual

# Purple Fountain Grass



- Full sun
- Purple leaves
- Purple flower plumes
- 3-5' tall
- Annual

Sun



# Herbs

- Thyme (English)
- Stevia
- Parsley (Italian Plain leaf)
- Oregano
- Chives
- Basil (Dolce Fresca)
- Sage



**ORCHIDS**

# Hybrid Cattleya Orchid Seedlings

## Parents



**Dr. Kim 1**

## New hybrid babies



**Dr. Kim 2**

**Kim white**— Small plant, blooms 2-3 times per season, flowers held in cascade

**Candice**— Tall plant, very fragrant, blooms once usually in September.

These seedlings are a result of crosses between these two parents and produced via Tissue Culture here on our campus by Dr. Hubstenberger. They are named after Dr. Kim Pittcock.

Seedlings are either hybrid 1. known as 'Dr. Kim 1' - Kim (mom) x Candice (dad) or hybrid 2. known as 'Dr. Kim 2' - Candice (mom) x Kim (dad).

We hope you'll be successful blooming them, and you should anticipate that the progeny will have colors, heights, and fragrance somewhere between the two parents.



**Orchids – not all orchids  
In the photos will be for sale**





# Hanging Baskets

- Spider plants
- Bolivian jew
- Boston Fern
- Bridal wreaths
- Geranium Ivy ('Summer Showers')
- Swedish ivy ('Emerald', variegated)
- Wandering jews (Fuzzy jew, Silver, Purple, Rainbow)



**Bolivian jew**



**Bridal wreath**



**Emerald Swedish Ivy**



**Spider Plant**



**Geranium  
'Summer Showers'**



**Silver Wandering Jew**



**Fuzzy Jew**



**Purple Jew**

**TOMATOES**

# Tomato – Better Boy



12 ounce fruit

Indeterminate fruit

72 days from transplant



# Tomato – Celebrity hybrid



Determinate  
varieties

(grows to specific ht  
and fruits at same  
time)

15" tall, 30" +  
wide

9 oz fruit

# Tomato – Supersweet 100



- Indeterminate
- 1" fruit
- Sweet fruit with high Vitamin C content
- Vining plant

# Perennials

# Aesclepias 'Hello Yellow'

## Butterfly Weed; Milkweed

Sun



- 2-3'tall, 1-2' wide
- Yellow from spring to late Fall
- Butterfly magnet!!

Perennial





# Agapanthus afranicus 'Artic Star'

## White African Lily

Partial  
Shade

Sun



- 2-3'tall, 1-2' wide
- White flowers mid to late Fall
- Butterfly magnet!!



Semi-Perennial



# Agapanthus afranicus 'Northern Starr'

## Blue African Lily

Sun

Partial  
Shade

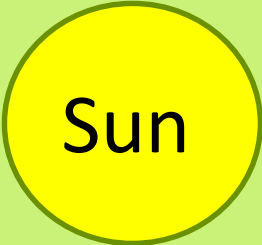
- 2-3'tall, 1-2' wide
- Blue flowers mid to late Fall
- Butterfly magnet!!

Dr. Pittcock Favorite!!

Semi-Perennial

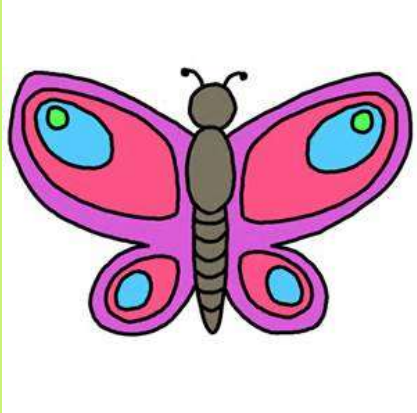


# Buddleia davadii Butterfly Bush



- 5-6 tall
- Butterfly magnet!!
- Light red (purple/red)

Perennial





# Echinacea 'Secret Passion' Coneflower

Sun



- Flamingo pink-double cones (flowers)
- Full sun, hot & dry site
- Attracts butterflies & hummingbirds
- New release  
limited quantities!

Perennial



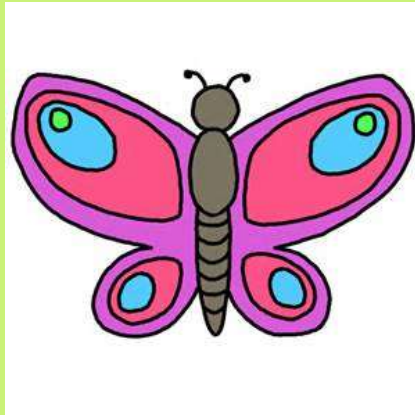


# Gaillardia 'Celebration' Blanket Flower

Sun



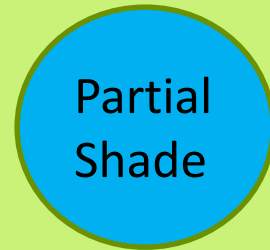
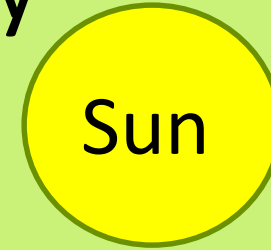
- 14-16" tall, 12-14" wide
- Red flowers
- **Flowers** May to October
- Full sun



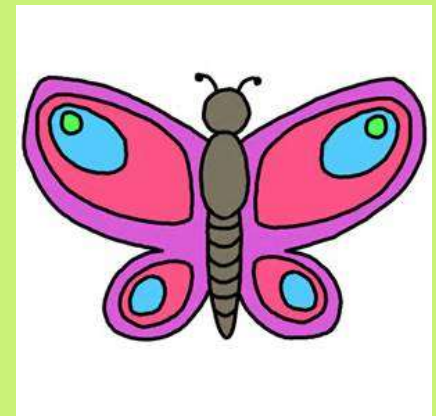
Perennial

# Gaura lindheimeri 'Ballerina Rose'

## Whirling Butterfly



- 18" tall, 12" wide
- rose star-shaped flowers in spring-fall
- Each flower last 1 day



# Heuchera 'Rave On' Coral Bells



Partial  
Shade

Shade

- Perennial
- Heat tolerant
- 10-12" tall and wide
- Red flower spikes

Perennial

# Phlox paniculata 'Flame Red'

## Flame Red Phlox

Sun

Partial  
Shade



- Dwarf - 16" tall
- Red flowers in late spring to early summer
- Reblooming
- Fragrant
- Tolerant to mildew

Perennial



# Salvia nemorosa 'Blue Marvel'

## Perennial Sage

Sun

- 10-12" tall and wide
- Blue flowers in late spring to fall
- Reblooming
- Drought tolerance

Perennial



# Scabiosa columbaria

## 'Flutter Deep Blue' –Pincushion Flower

Sun



- 12-14" tall and 10-12" wide
- Blue flowers in late spring to late summer
- Reblooming
- Drought tolerance

Perennial

# Tiareella 'Spring Symphony' Foamflower

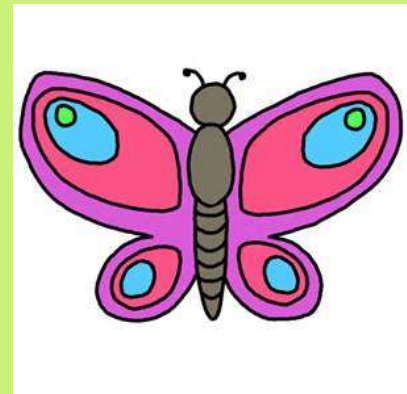
Partial  
Shade

Shade



Light pink flowers  
Flowers from late spring  
to mid summer  
Attracts butterflies  
8-10" tall  
10-12" wide

Perennial





# Verbena 'Homestead Purple'

## Homestead Purple Verbena

Sun



- Purple flowers
- 1' tall, groundcover
- Flowers from March - Sept
- Attracts butterflies and hummingbirds

Perennial

