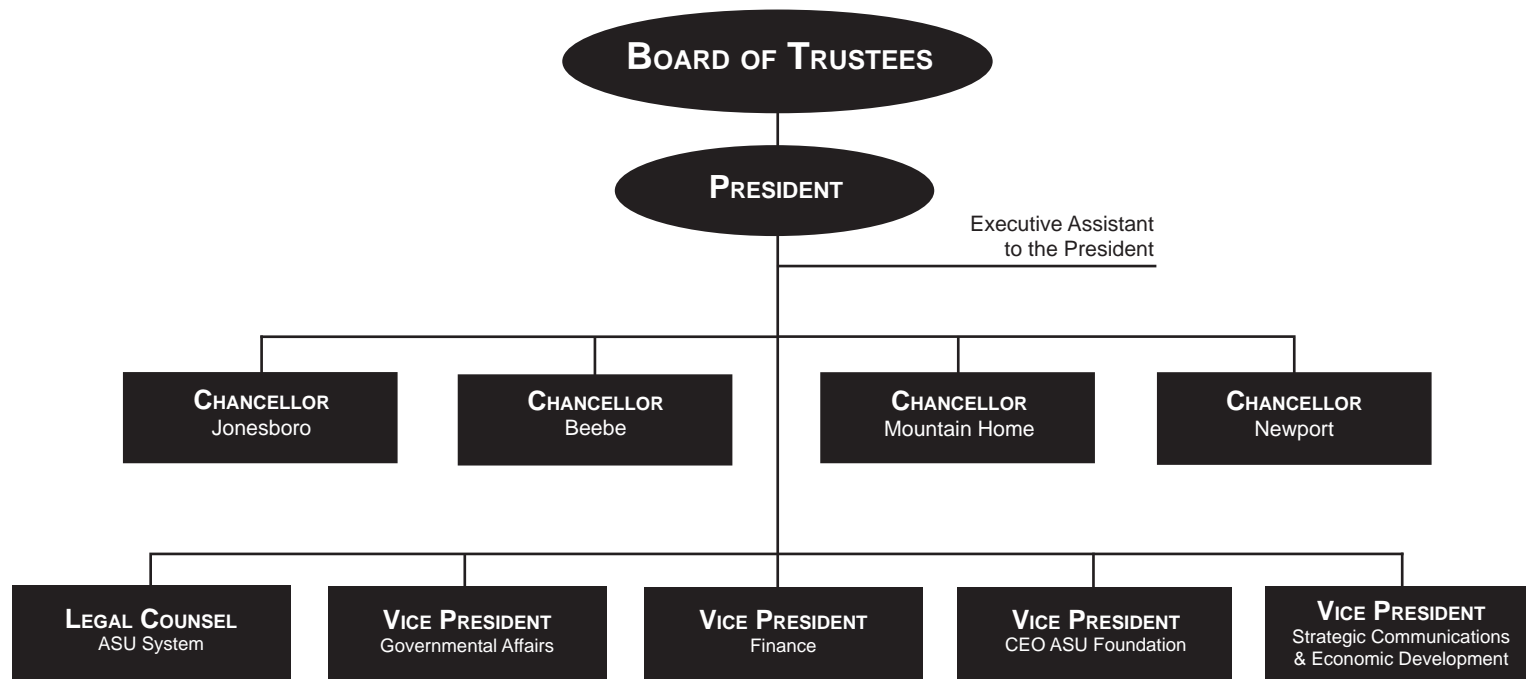




# Arkansas State University System

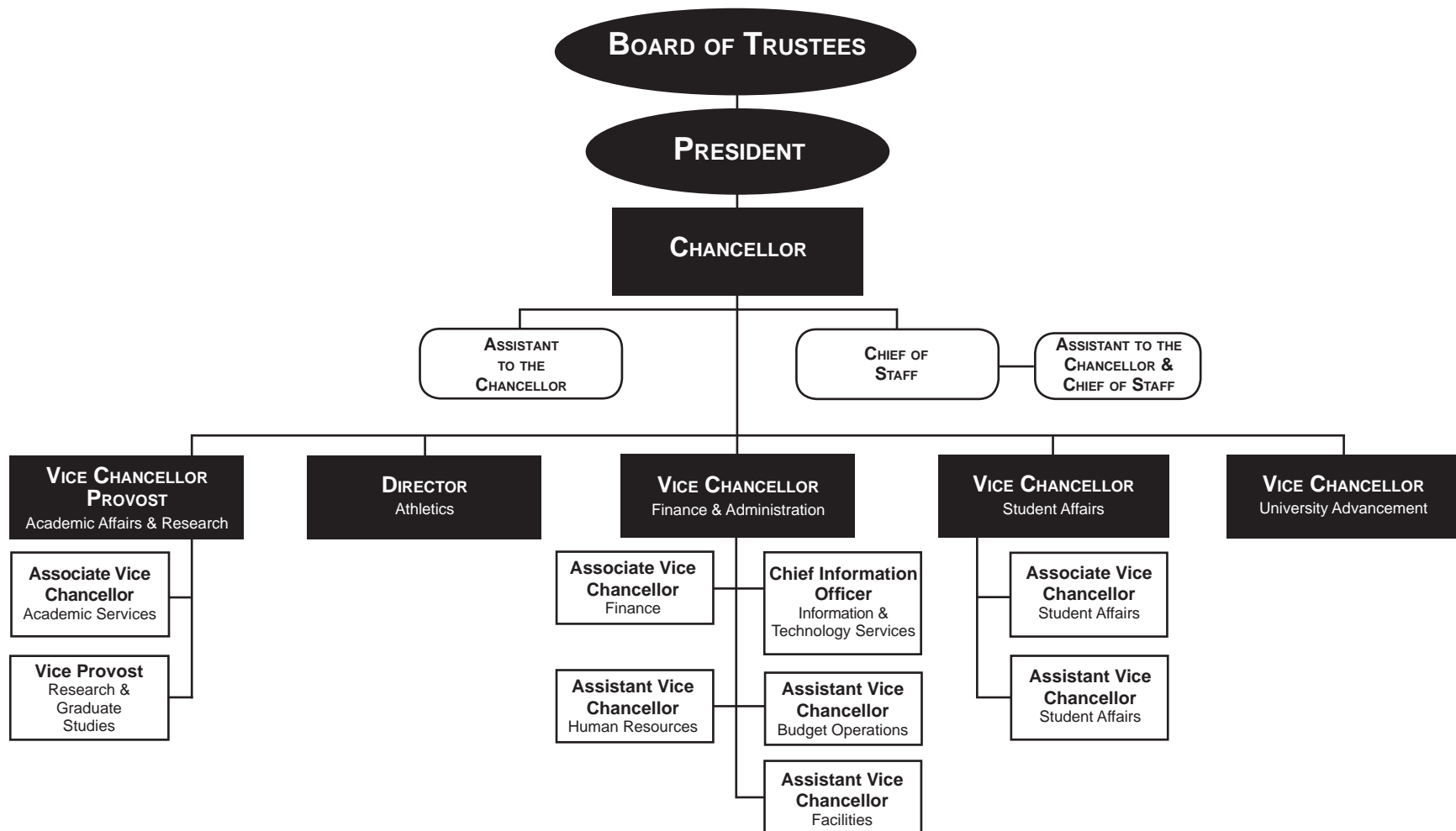
## 2014-2015 Organizational Structure



# Arkansas State University-ASU, Jonesboro



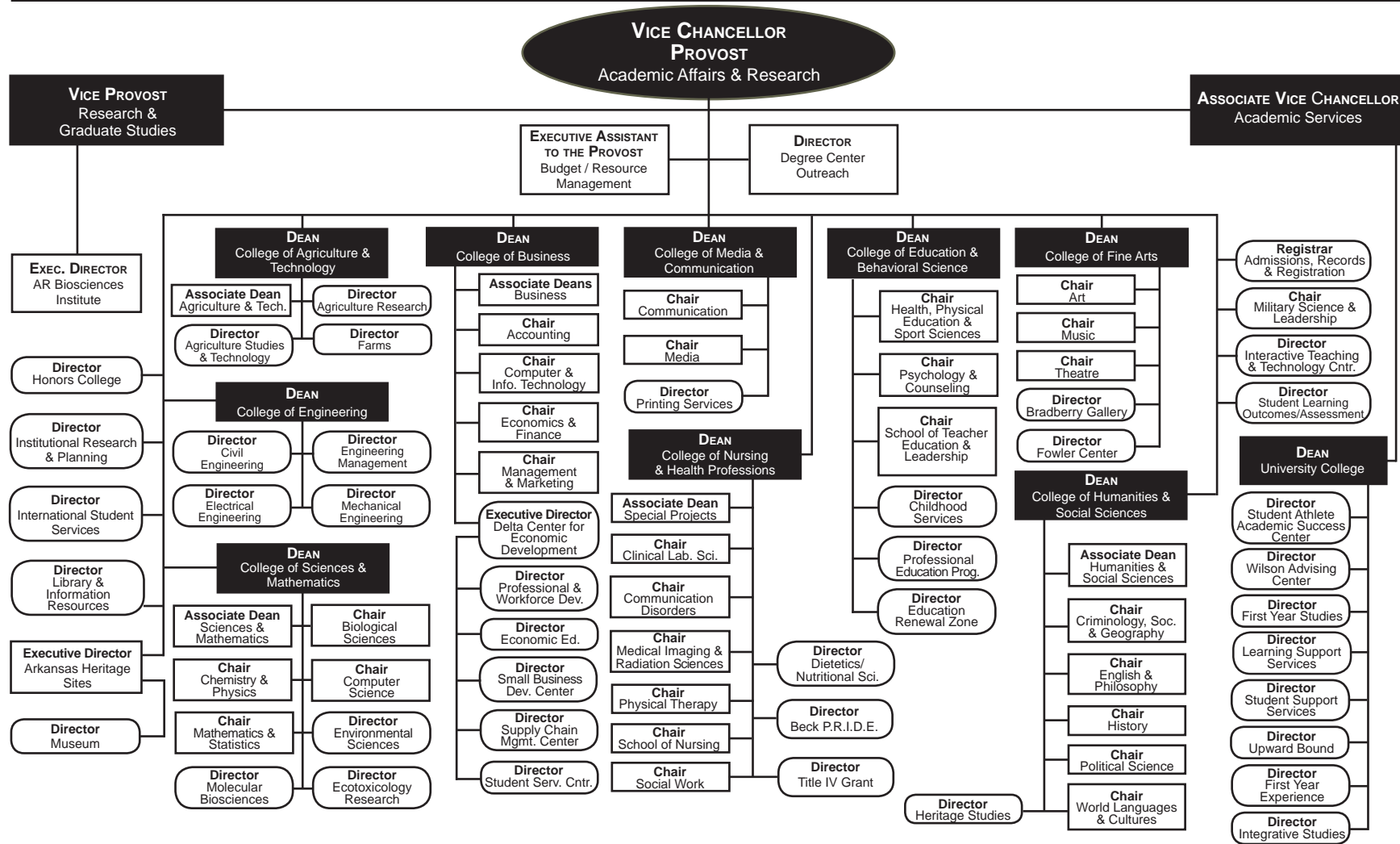
## 2014-2015 Organizational Structure



Data Source: Office of the Chancellor of Arkansas State University  
 Information Source: The Office of Institutional Research & Planning; web address: [www.astate.edu/irp](http://www.astate.edu/irp); email address: [asuirp@astate.edu](mailto:asuirp@astate.edu)

# Academic Affairs & Research, ASU-Jonesboro

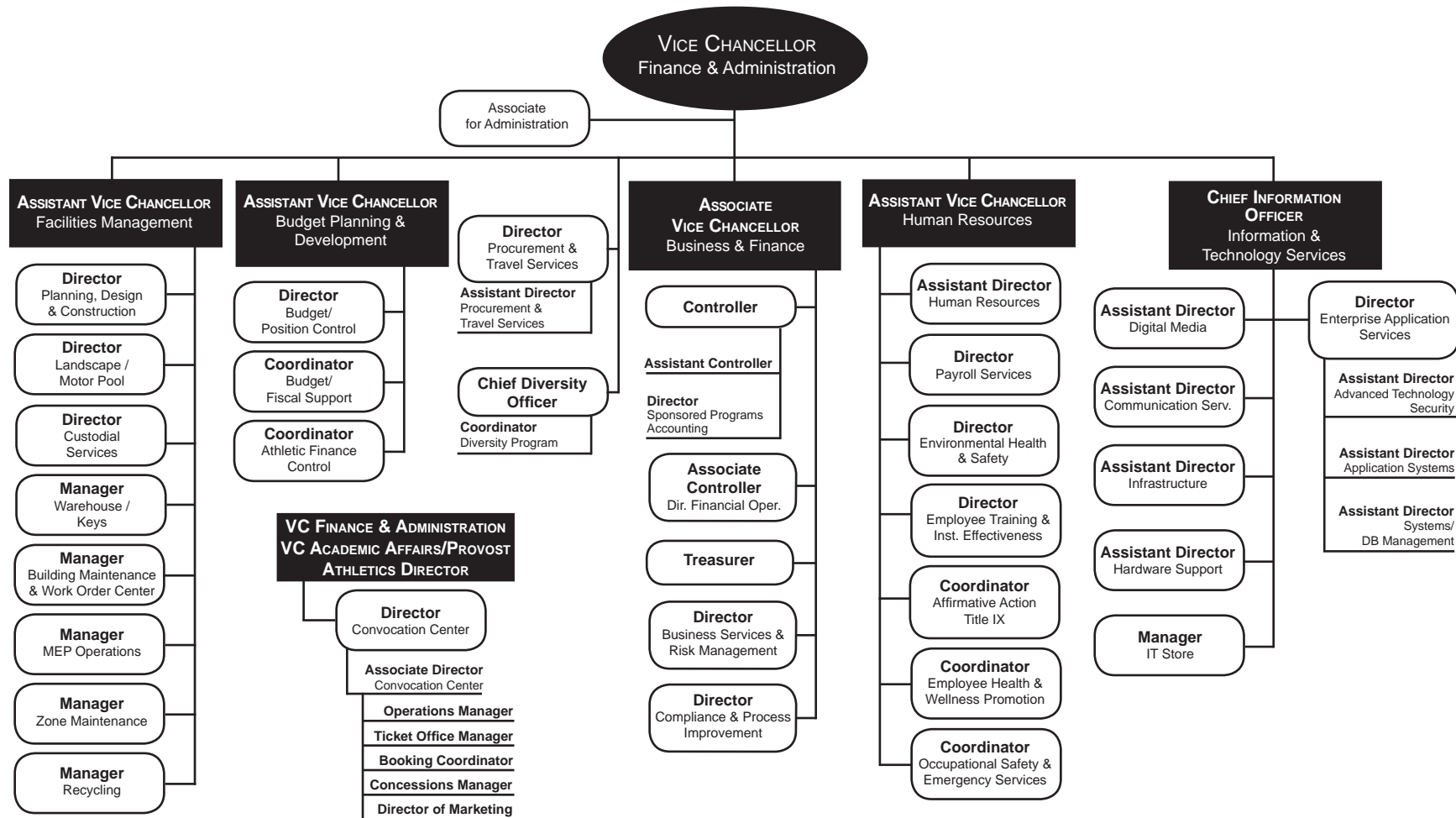
## 2014-2015 Organizational Structure



# Finance & Administration, ASU-Jonesboro



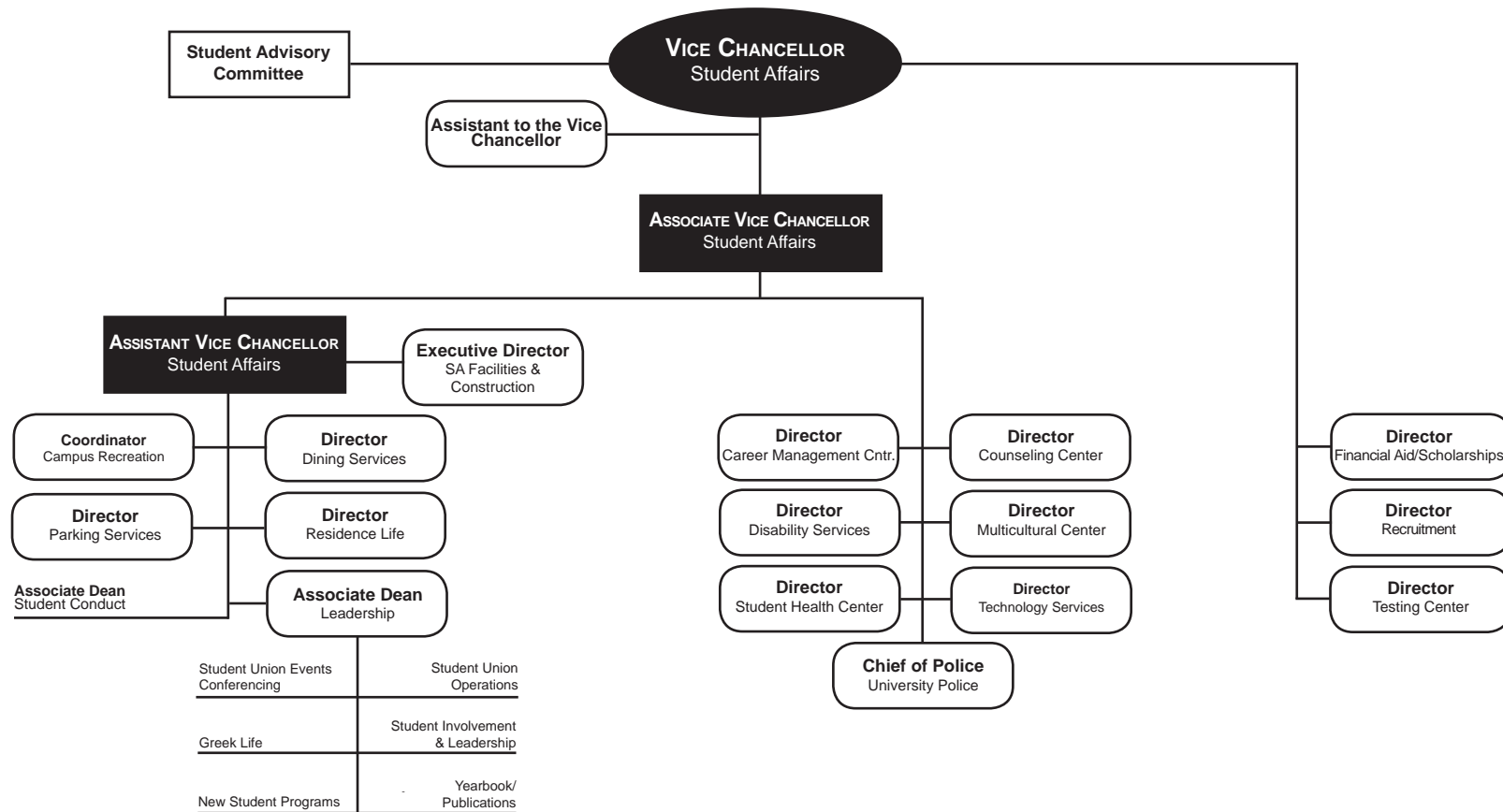
## 2014-2015 Organizational Structure



# Student Affairs, ASU-Jonesboro



## 2014-2015 Organizational Structure



# University Advancement, ASU-Jonesboro



**University Advancement Mission Statement:**  
*We promote and build partnerships that strengthen and support the University.*

