

# Arkansas State University

## **Enrollment Management Information:** **First-Time Freshmen ACT Scores** **Historical Profile** **Fall 2009 - Fall 2015**

The Office of Institutional Research & Planning  
email: [asuirp@astate.edu](mailto:asuirp@astate.edu)  
web: [www.astate.edu/a/irp](http://www.astate.edu/a/irp)

Disclaimer: It is important to note that the information in this profile may differ from data reported by the Office of Institutional Research & Planning to other federal, state, and regional agencies due to differences in reporting guidelines, reporting definitions, and the timing of when the information was prepared.

# Historical Fall ACT Composite Scores

Arkansas State University

## Number of Fall First-Time Freshmen by ACT Composite Scores

Jonesboro Campus

ACT Test Scores	Fall Semesters							2009-2015 Cumulative Total	Cumulative % of Total							2009-2015 % of Total	
	2009	2010	2011	2012	2013	2014	2015		2009	2010	2011	2012	2013	2014	2015		
Above State Standards	36	0	0	0	0	0	0	0	0.0%	0.0%	0.0%	0.0%	0.0%	0.0%	0.0%	0.0%	0.0%
	35	0	1	0	0	0	0	0	1	0.0%	0.1%	0.0%	0.0%	0.0%	0.0%	0.0%	0.0%
	34	1	1	0	2	0	3	3	10	0.1%	0.1%	0.0%	0.1%	0.0%	0.2%	0.2%	0.1%
	33	1	1	7	2	4	8	5	28	0.1%	0.2%	0.4%	0.2%	0.2%	0.6%	0.5%	0.2%
	32	8	5	11	8	10	21	15	78	0.6%	0.5%	1.2%	0.7%	0.9%	1.9%	1.5%	0.7%
	31	17	16	19	20	24	25	24	145	1.6%	1.4%	2.4%	1.9%	2.3%	3.4%	3.0%	1.3%
	30	29	27	35	25	34	71	48	269	3.2%	3.0%	4.6%	3.4%	4.4%	7.5%	6.0%	2.3%
	29	52	43	41	39	55	53	64	347	6.3%	5.5%	7.2%	5.7%	7.8%	10.7%	10.1%	3.0%
	28	50	56	67	73	95	103	85	529	9.2%	8.7%	11.5%	10.1%	13.7%	16.7%	15.5%	4.6%
	27	58	75	81	102	93	112	114	635	12.5%	13.1%	16.7%	16.2%	19.5%	23.3%	22.7%	5.5%
	26	68	82	97	114	120	125	102	708	16.5%	17.9%	22.9%	23.0%	26.9%	30.7%	29.2%	6.1%
	25	99	117	108	110	130	136	130	830	22.2%	24.7%	29.8%	29.6%	34.9%	38.7%	37.4%	7.2%
	24	109	148	133	152	124	155	145	966	28.5%	33.3%	38.3%	38.7%	42.6%	47.8%	46.6%	8.4%
	23	80	128	112	125	129	155	143	872	33.2%	40.8%	45.5%	46.2%	50.5%	56.9%	55.7%	7.5%
22	101	126	143	159	163	170	152	1,014	39.0%	48.1%	54.7%	55.7%	60.6%	67.0%	65.3%	8.8%	
21	129	159	106	202	182	147	145	1,070	46.5%	57.4%	61.5%	67.8%	71.8%	75.6%	74.5%	9.2%	
20	172	140	156	128	127	120	111	954	56.5%	65.6%	71.4%	75.5%	79.7%	82.7%	81.5%	8.2%	
19	144	142	138	127	122	127	129	929	64.8%	73.8%	80.3%	83.1%	87.2%	90.2%	89.7%	8.0%	
Below State Standards	18	123	116	65	106	87	27	26	550	71.9%	80.6%	84.4%	89.4%	92.6%	91.8%	91.4%	4.8%
	17	104	94	54	23	15	21	12	323	78.0%	86.1%	87.9%	90.8%	93.5%	93.0%	92.1%	2.8%
	16	81	41	42	15	10	10	8	207	82.7%	88.5%	90.6%	91.7%	94.1%	93.6%	92.6%	1.8%
	15	64	20	5	8	4	3	2	106	86.4%	89.6%	90.9%	92.2%	94.4%	93.8%	92.8%	0.9%
	14	32	16	1	0	2	2	2	55	88.2%	90.6%	91.0%	92.2%	94.5%	93.9%	92.9%	0.5%
	13	17	3	0	0	1	0	0	21	89.2%	90.7%	91.0%	92.2%	94.6%	93.9%	92.9%	0.2%
	12	9	0	0	0	0	0	0	9	89.7%	90.7%	91.0%	92.2%	94.6%	93.9%	92.9%	0.1%
	11	1	0	0	0	0	0	0	1	89.8%	90.7%	91.0%	92.2%	94.6%	93.9%	92.9%	0.0%
1-10	1	1	0	0	0	1	0	3	89.9%	90.8%	91.0%	92.2%	94.6%	93.9%	92.9%	0.0%	
<b>Total ACT Scores</b>	<b>1,550</b>	<b>1,558</b>	<b>1,421</b>	<b>1,540</b>	<b>1,531</b>	<b>1,595</b>	<b>1,465</b>	<b>10,660</b>	<b>89.9%</b>	<b>90.8%</b>	<b>91.0%</b>	<b>92.2%</b>	<b>94.6%</b>	<b>93.9%</b>	<b>92.9%</b>	<b>92.2%</b>	
ASSET/Compass/SAT <sup>+</sup>	175	158	141	131	88	103	112	908	10.1%	9.2%	9.0%	7.8%	5.4%	6.1%	7.1%	7.8%	
<b>Total First-Time Freshmen</b>	<b>1,725</b>	<b>1,716</b>	<b>1,562</b>	<b>1,671</b>	<b>1,619</b>	<b>1,698</b>	<b>1,577</b>	<b>11,568</b>	<b>Percentile Rank</b>								
<b>ASUJ ACT Composite Average</b>	<b>21.3</b>	<b>22.1</b>	<b>22.8</b>	<b>22.9</b>	<b>23.3</b>	<b>23.9</b>	<b>23.8</b>		75th	24	25	26	25	26	26		
									50th	21	22	23	23	23	24		
<b>Average High School GPA</b>	<b>3.15</b>	<b>3.28</b>	<b>3.34</b>	<b>3.34</b>	<b>3.44</b>	<b>3.47</b>	<b>3.51</b>		25th	18	19	20	20	21	21		

\*Includes students without test scores.

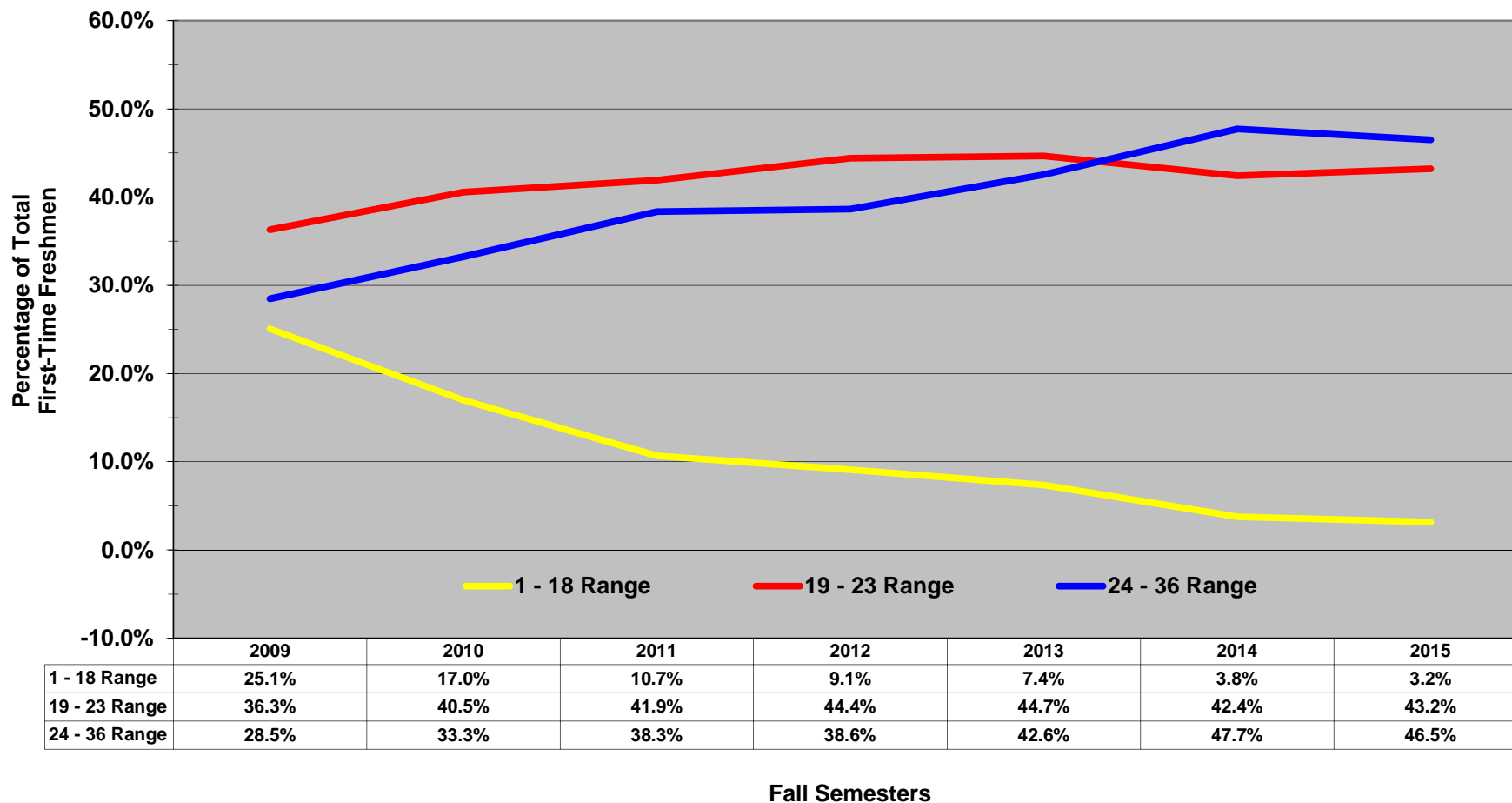
Disclaimer: It is important to note that the information in this profile may differ from data reported by the Office of Institutional Research & Planning to other federal, state, and regional agencies due to differences in reporting guidelines, reporting definitions, and the timing of when the information was prepared. Analysis prepared by the Office of Institutional Research & Planning.

# Historical Fall ACT Composite Scores

Arkansas State University

## Proportion of Fall First-Time Freshmen by ACT Composite Score Ranges

Jonesboro Campus



NOTE: Students who did not submit ACT scores are not represented.

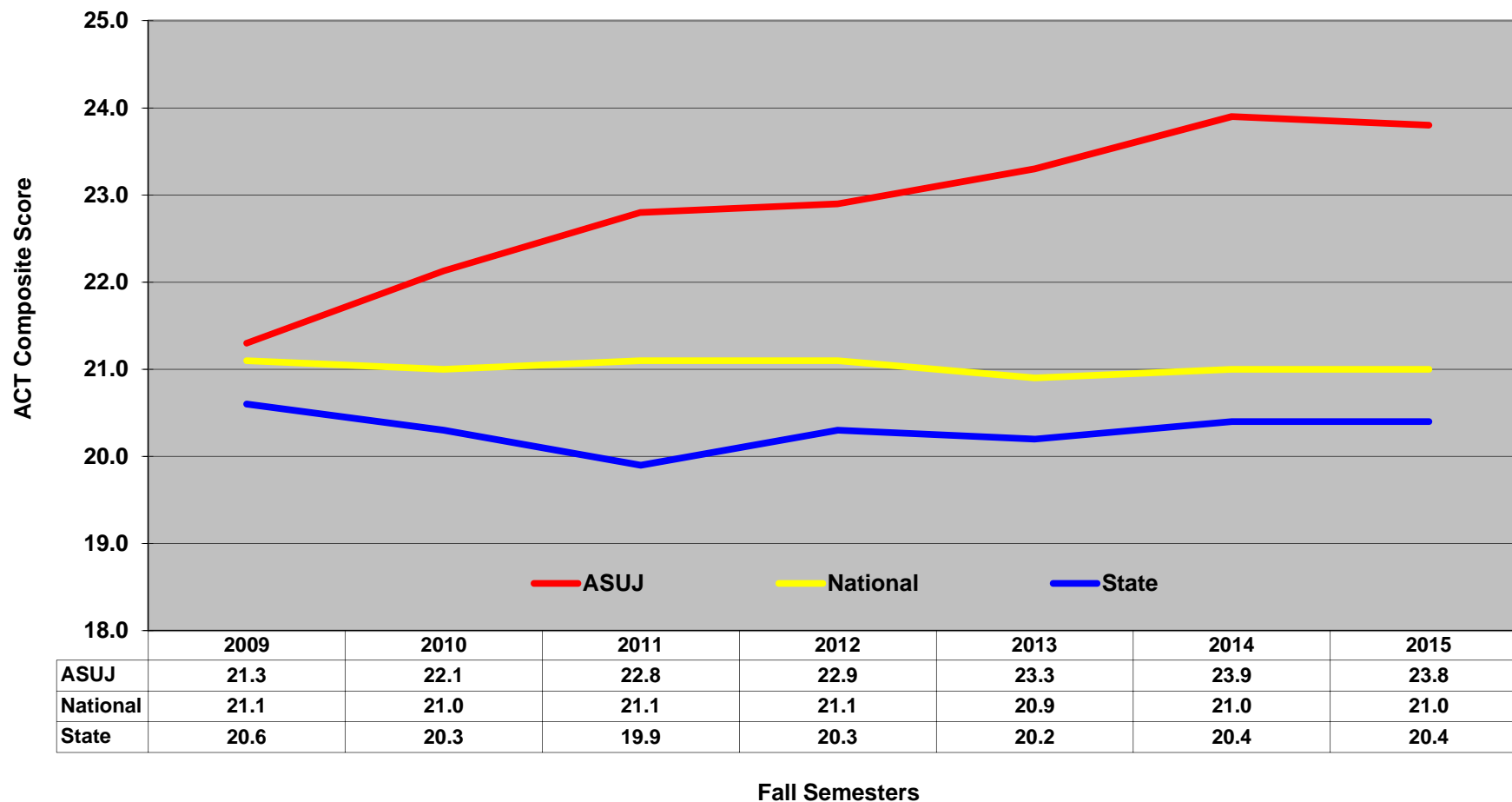
Disclaimer: It is important to note that the information in this profile may differ from data reported by the Office of Institutional Research & Planning to other federal, state, and regional agencies due to differences in reporting guidelines, reporting definitions, and the timing of when the information was prepared. Analysis prepared by the Office of Institutional Research & Planning.

# Historical Fall ACT Composite Averages

Arkansas State University

## Fall First-Time Freshmen by ACT Composite Averages

Jonesboro Campus



NOTE: Students who did not submit ACT scores are not represented.

Disclaimer: It is important to note that the information in this profile may differ from data reported by the Office of Institutional Research & Planning to other federal, state, and regional agencies due to differences in reporting guidelines, reporting definitions, and the timing of when the information was prepared. Analysis prepared by the Office of Institutional Research & Planning.

# Historical Fall ACT Composite Scores - African American Females

Arkansas State University

## Number of Fall First-Time Freshmen by ACT Composite Scores

Jonesboro Campus

ACT Test Scores	Fall Semesters							2009-2015 Cumulative Total	Cumulative % of Total							2009-2015 % of Total	
	2009	2010	2011	2012	2013	2014	2015		2009	2010	2011	2012	2013	2014	2015		
Above State Standards	36	0	0	0	0	0	0	0	0.0%	0.0%	0.0%	0.0%	0.0%	0.0%	0.0%	0.0%	
	35	0	0	0	0	0	0	0	0.0%	0.0%	0.0%	0.0%	0.0%	0.0%	0.0%	0.0%	
	34	0	0	0	0	0	0	0	0.0%	0.0%	0.0%	0.0%	0.0%	0.0%	0.0%	0.0%	
	33	0	0	0	0	0	0	0	0.0%	0.0%	0.0%	0.0%	0.0%	0.0%	0.0%	0.0%	
	32	0	0	0	0	0	0	0	0.0%	0.0%	0.0%	0.0%	0.0%	0.0%	0.0%	0.0%	
	31	0	0	1	0	0	0	0	1	0.0%	0.0%	0.7%	0.0%	0.0%	0.0%	0.0%	0.1%
	30	0	0	0	0	1	0	1	2	0.0%	0.0%	0.7%	0.0%	0.7%	0.0%	1.0%	0.2%
	29	0	0	0	0	0	2	1	3	0.0%	0.0%	0.7%	0.0%	0.7%	1.9%	2.0%	0.3%
	28	0	0	1	1	2	2	1	7	0.0%	0.0%	1.3%	0.7%	2.2%	3.7%	3.0%	0.7%
	27	2	3	4	3	3	2	2	19	1.1%	1.6%	4.0%	2.8%	4.4%	5.6%	5.0%	1.9%
	26	0	2	4	4	6	2	4	22	1.1%	2.7%	6.7%	5.5%	8.8%	7.5%	8.9%	2.2%
	25	2	4	6	4	6	6	7	35	2.1%	4.8%	10.7%	8.3%	13.1%	13.1%	15.8%	3.5%
	24	3	8	6	3	8	6	5	39	3.7%	9.1%	14.8%	10.3%	19.0%	18.7%	20.8%	3.8%
23	1	6	8	9	8	3	5	40	4.3%	12.3%	20.1%	16.6%	24.8%	21.5%	25.7%	3.9%	
22	7	7	13	18	10	12	15	82	8.0%	16.0%	28.9%	29.0%	32.1%	32.7%	40.6%	8.1%	
21	9	21	12	20	25	20	15	122	12.8%	27.3%	36.9%	42.8%	50.4%	51.4%	55.4%	12.0%	
20	19	19	26	19	15	13	12	123	23.0%	37.4%	54.4%	55.9%	61.3%	63.6%	67.3%	12.1%	
19	16	26	25	25	19	24	22	157	31.6%	51.3%	71.1%	73.1%	75.2%	86.0%	89.1%	15.5%	
Below State Standards	18	34	24	13	26	18	2	6	123	49.7%	64.2%	79.9%	91.0%	88.3%	87.9%	95.0%	12.1%
	17	22	29	11	5	2	4	1	74	61.5%	79.7%	87.2%	94.5%	89.8%	91.6%	96.0%	7.3%
	16	21	17	14	5	2	2	1	62	72.7%	88.8%	96.6%	97.9%	91.2%	93.5%	97.0%	6.1%
	15	20	8	1	0	1	2	0	32	83.4%	93.0%	97.3%	97.9%	92.0%	95.3%	97.0%	3.2%
	14	11	8	1	0	1	0	1	22	89.3%	97.3%	98.0%	97.9%	92.7%	95.3%	98.0%	2.2%
	13	5	1	0	0	1	0	0	7	92.0%	97.9%	98.0%	97.9%	93.4%	95.3%	98.0%	0.7%
	12	2	0	0	0	0	0	0	2	93.0%	97.9%	98.0%	97.9%	93.4%	95.3%	98.0%	0.2%
	11	0	0	0	0	0	0	0	0	93.0%	97.9%	98.0%	97.9%	93.4%	95.3%	98.0%	0.0%
1-10	1	0	0	0	0	0	0	1	93.6%	97.9%	98.0%	97.9%	93.4%	95.3%	98.0%	0.1%	
<b>Total ACT Scores</b>	<b>175</b>	<b>183</b>	<b>146</b>	<b>142</b>	<b>128</b>	<b>102</b>	<b>99</b>	<b>975</b>	<b>93.6%</b>	<b>97.9%</b>	<b>98.0%</b>	<b>97.9%</b>	<b>93.4%</b>	<b>95.3%</b>	<b>98.0%</b>	<b>96.2%</b>	
ASSET/Compass/SAT <sup>+</sup>	12	4	3	3	9	5	2	38	6.4%	2.1%	2.0%	2.1%	6.6%	4.7%	2.0%	3.8%	
<b>Total First-Time Freshmen</b>	<b>187</b>	<b>187</b>	<b>149</b>	<b>145</b>	<b>137</b>	<b>107</b>	<b>101</b>	<b>1,013</b>	<b>Percentile Rank</b>								
<b>ASUJ ACT Composite Average</b>	<b>17.7</b>	<b>19.0</b>	<b>20.2</b>	<b>20.4</b>	<b>21.0</b>	<b>21.1</b>	<b>21.3</b>	<b>75th</b>	<b>19</b>	<b>21</b>	<b>22</b>	<b>22</b>	<b>23</b>	<b>22</b>	<b>22</b>		
								<b>50th</b>	<b>18</b>	<b>19</b>	<b>20</b>	<b>20</b>	<b>21</b>	<b>21</b>	<b>21</b>		
<b>Average High School GPA</b>	<b>2.84</b>	<b>3.03</b>	<b>3.18</b>	<b>3.20</b>	<b>3.22</b>	<b>3.22</b>	<b>3.36</b>	<b>25th</b>	<b>16</b>	<b>17</b>	<b>18</b>	<b>18</b>	<b>19</b>	<b>19</b>	<b>19</b>		

<sup>+</sup>Includes students without test scores.

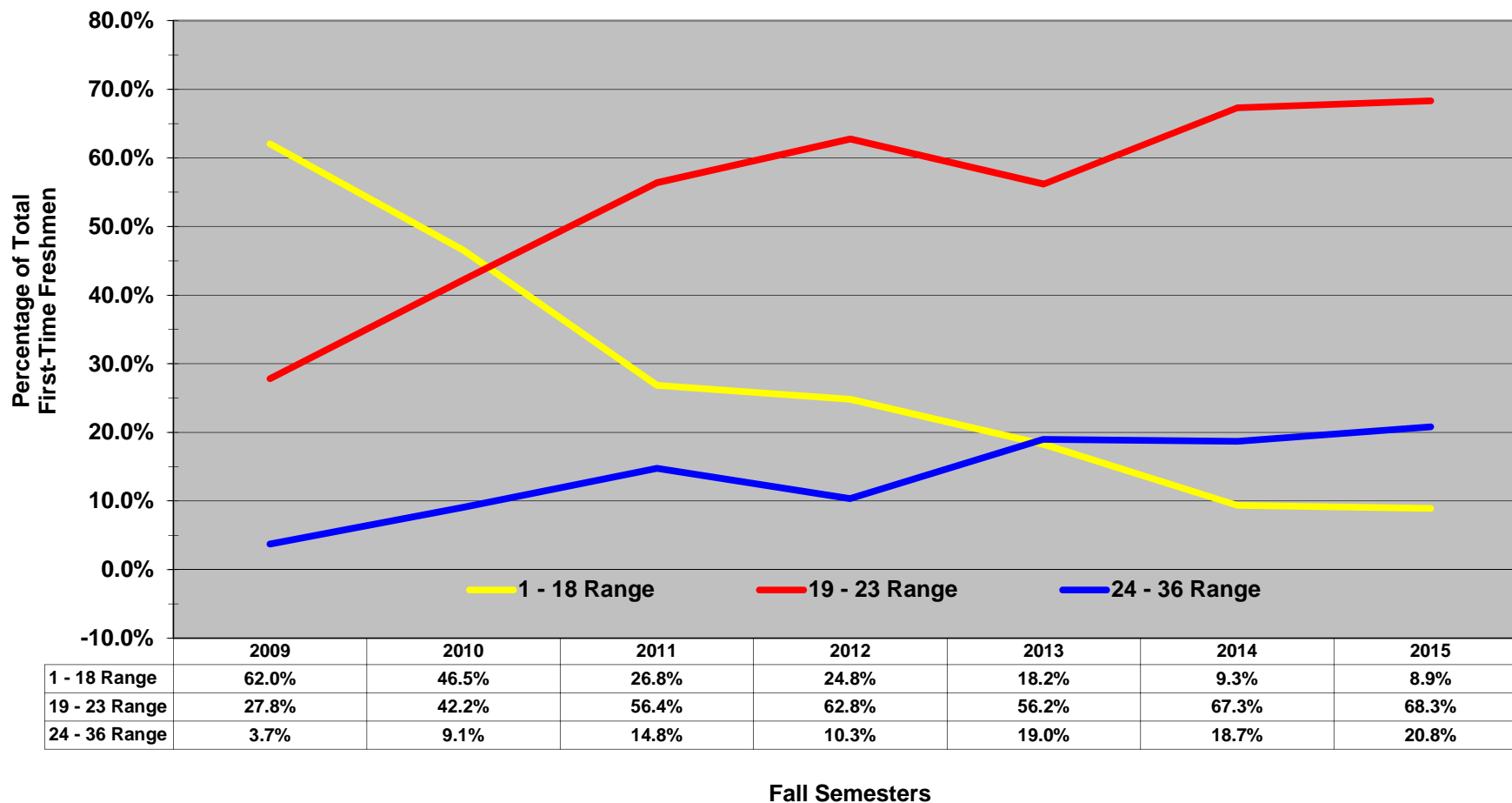
Disclaimer: It is important to note that the information in this profile may differ from data reported by the Office of Institutional Research & Planning to other federal, state, and regional agencies due to differences in reporting guidelines, reporting definitions, and the timing of when the information was prepared. Analysis prepared by the Office of Institutional Research & Planning.

# Historical Fall ACT Composite Scores - African American Females

Arkansas State University

## Proportion of Fall First-Time Freshmen by ACT Composite Score Ranges

Jonesboro Campus



NOTE: Students who did not submit ACT scores are not represented.

Disclaimer: It is important to note that the information in this profile may differ from data reported by the Office of Institutional Research & Planning to other federal, state, and regional agencies due to differences in reporting guidelines, reporting definitions, and the timing of when the information was prepared. Analysis prepared by the Office of Institutional Research & Planning.

# Historical Fall ACT Composite Scores - African American Males

Arkansas State University

## Number of Fall First-Time Freshmen by ACT Composite Scores

Jonesboro Campus

ACT Test Scores	Fall Semesters							2009-2015 Cumulative Total	Cumulative % of Total							2009-2015 % of Total	
	2009	2010	2011	2012	2013	2014	2015		2009	2010	2011	2012	2013	2014	2015		
Above State Standards	36	0	0	0	0	0	0	0	0.0%	0.0%	0.0%	0.0%	0.0%	0.0%	0.0%	0.0%	
	35	0	0	0	0	0	0	0	0.0%	0.0%	0.0%	0.0%	0.0%	0.0%	0.0%	0.0%	
	34	0	0	0	0	0	0	0	0.0%	0.0%	0.0%	0.0%	0.0%	0.0%	0.0%	0.0%	
	33	0	0	0	0	0	0	0	0.0%	0.0%	0.0%	0.0%	0.0%	0.0%	0.0%	0.0%	
	32	0	0	0	0	0	0	0	0.0%	0.0%	0.0%	0.0%	0.0%	0.0%	0.0%	0.0%	
	31	0	0	1	1	0	0	0	2	0.0%	0.0%	0.9%	0.9%	0.0%	0.0%	0.0%	0.3%
	30	0	1	0	0	0	0	0	1	0.0%	0.7%	0.9%	0.9%	0.0%	0.0%	0.0%	0.1%
	29	0	0	0	0	0	0	0	0	0.0%	0.7%	0.9%	0.9%	0.0%	0.0%	0.0%	0.0%
	28	0	0	1	0	0	0	1	2	0.0%	0.7%	1.9%	0.9%	0.0%	0.0%	1.6%	0.3%
	27	0	0	0	1	1	1	0	2	0.0%	0.7%	1.9%	1.7%	1.1%	0.0%	4.8%	0.6%
	26	3	2	1	2	0	0	2	10	2.1%	2.2%	2.8%	3.4%	1.1%	0.0%	7.9%	1.4%
	25	5	1	3	4	6	5	3	27	5.6%	3.0%	5.7%	6.9%	7.9%	6.8%	12.7%	3.7%
	24	2	6	5	6	7	1	2	29	7.0%	7.5%	10.4%	12.1%	15.7%	8.2%	15.9%	4.0%
23	4	7	9	4	5	6	5	40	9.9%	12.7%	18.9%	15.5%	21.3%	16.4%	23.8%	5.5%	
22	4	6	9	11	6	8	5	49	12.7%	17.2%	27.4%	25.0%	28.1%	27.4%	31.7%	6.8%	
21	9	9	7	19	5	7	6	62	19.0%	23.9%	34.0%	41.4%	33.7%	37.0%	41.3%	8.6%	
20	11	15	16	11	17	12	7	89	26.8%	35.1%	49.1%	50.9%	52.8%	53.4%	52.4%	12.3%	
19	20	11	15	18	19	13	13	109	40.8%	43.3%	63.2%	66.4%	74.2%	71.2%	73.0%	15.1%	
Below State Standards	18	18	27	11	18	13	1	5	93	53.5%	63.4%	73.6%	81.9%	88.8%	72.6%	81.0%	12.9%
	17	14	22	18	9	5	6	1	75	63.4%	79.9%	90.6%	89.7%	94.4%	80.8%	82.5%	10.4%
	16	17	8	7	4	1	3	4	44	75.4%	85.8%	97.2%	93.1%	95.5%	84.9%	88.9%	6.1%
	15	15	5	0	3	0	0	0	23	85.9%	89.6%	97.2%	95.7%	95.5%	84.9%	88.9%	3.2%
	14	3	6	0	0	0	2	0	11	88.0%	94.0%	97.2%	95.7%	95.5%	87.7%	88.9%	1.5%
	13	3	1	0	0	0	0	0	4	90.1%	94.8%	97.2%	95.7%	95.5%	87.7%	88.9%	0.6%
	12	3	0	0	0	0	0	0	3	92.3%	94.8%	97.2%	95.7%	95.5%	87.7%	88.9%	0.4%
	11	0	0	0	0	0	0	0	0	92.3%	94.8%	97.2%	95.7%	95.5%	87.7%	88.9%	0.0%
1-10	0	0	0	0	0	1	0	1	92.3%	94.8%	97.2%	95.7%	95.5%	89.0%	88.9%	0.1%	
<b>Total ACT Scores</b>	<b>131</b>	<b>127</b>	<b>103</b>	<b>111</b>	<b>85</b>	<b>65</b>	<b>56</b>	<b>678</b>	<b>92.3%</b>	<b>94.8%</b>	<b>97.2%</b>	<b>95.7%</b>	<b>95.5%</b>	<b>89.0%</b>	<b>88.9%</b>	<b>93.8%</b>	
ASSET/Compass/SAT <sup>+</sup>	11	7	3	5	4	8	7	45	7.7%	5.2%	2.8%	4.3%	4.5%	11.0%	11.1%	6.2%	
<b>Total First-Time Freshmen</b>	<b>142</b>	<b>134</b>	<b>106</b>	<b>116</b>	<b>89</b>	<b>73</b>	<b>63</b>	<b>723</b>	<b>Percentile Rank</b>								
<b>ASUJ ACT Composite Average</b>	<b>18.3</b>	<b>18.9</b>	<b>19.9</b>	<b>20.1</b>	<b>20.4</b>	<b>20.0</b>	<b>20.8</b>	75th	<b>20</b>	<b>20</b>	<b>22</b>	<b>22</b>	<b>22</b>	<b>22</b>	<b>21</b>		
								50th	<b>18</b>	<b>18</b>	<b>20</b>	<b>20</b>	<b>20</b>	<b>20</b>	<b>19</b>		
<b>Average High School GPA</b>	<b>2.71</b>	<b>2.91</b>	<b>2.94</b>	<b>2.96</b>	<b>3.01</b>	<b>3.03</b>	<b>3.02</b>	25th	<b>16</b>	<b>17</b>	<b>18</b>	<b>18</b>	<b>19</b>	<b>19</b>	<b>18</b>		

\*Includes students without test scores.

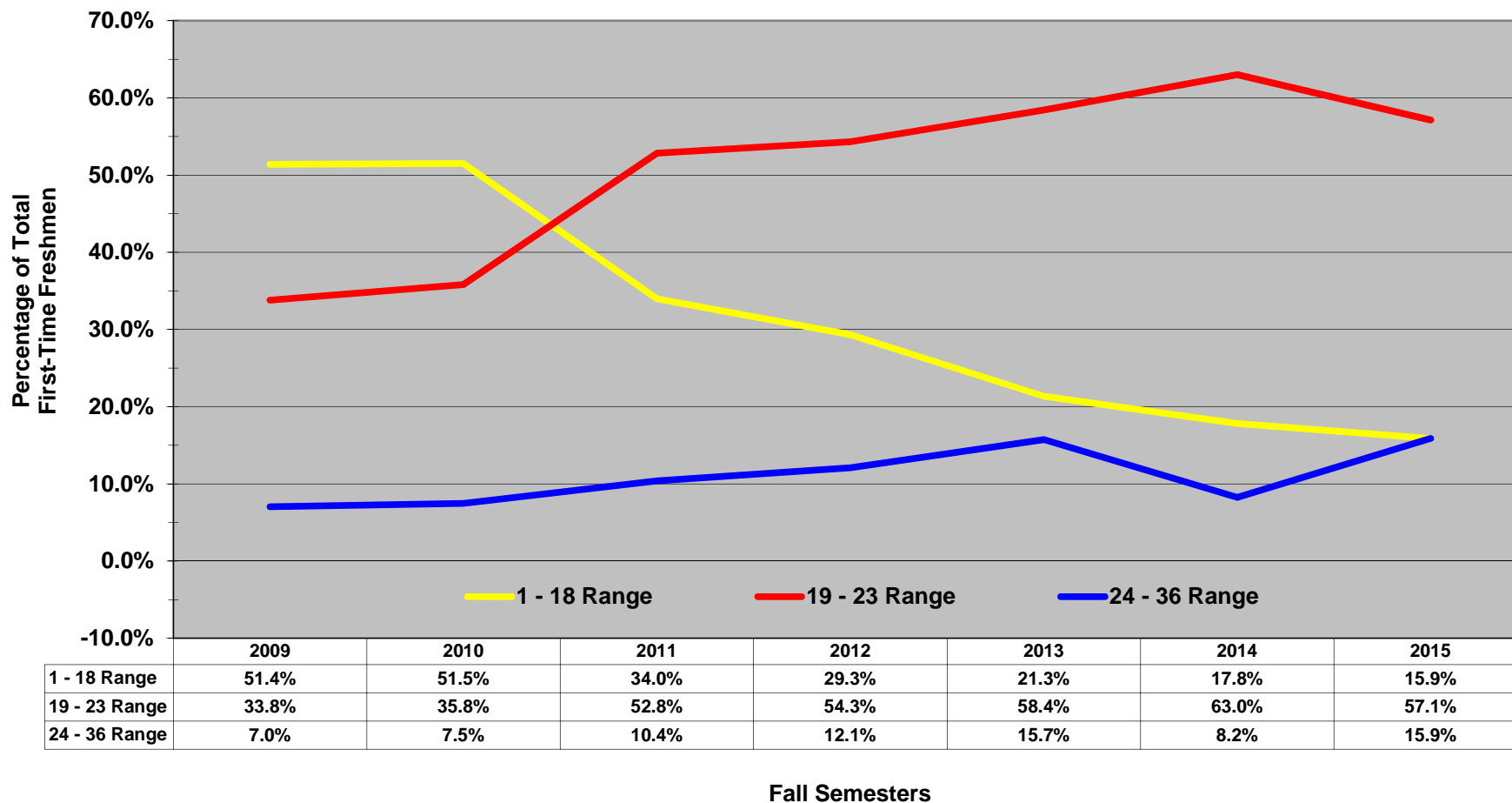
Disclaimer: It is important to note that the information in this profile may differ from data reported by the Office of Institutional Research & Planning to other federal, state, and regional agencies due to differences in reporting guidelines, reporting definitions, and the timing of when the information was prepared. Analysis prepared by the Office of Institutional Research & Planning.

# Historical Fall ACT Composite Scores - African American Males

Arkansas State University

## Proportion of Fall First-Time Freshmen by ACT Composite Score Ranges

Jonesboro Campus



NOTE: Students who did not submit ACT scores are not represented.

Disclaimer: It is important to note that the information in this profile may differ from data reported by the Office of Institutional Research & Planning to other federal, state, and regional agencies due to differences in reporting guidelines, reporting definitions, and the timing of when the information was prepared. Analysis prepared by the Office of Institutional Research & Planning.



# Historical Fall ACT Composite Scores - White Females

Arkansas State University

## Number of Fall First-Time Freshmen by ACT Composite Scores

Jonesboro Campus

ACT Test Scores	Fall Semesters							2009-2015 Cumulative Total	Cumulative % of Total							2009-2015 % of Total	
	2009	2010	2011	2012	2013	2014	2015		2009	2010	2011	2012	2013	2014	2015		
36	0	0	0	0	0	0	0	0	0.0%	0.0%	0.0%	0.0%	0.0%	0.0%	0.0%	0.0%	0.0%
35	0	1	0	0	0	0	0	1	0.0%	0.2%	0.0%	0.0%	0.0%	0.0%	0.0%	0.0%	0.0%
34	1	0	0	0	0	1	3	5	0.2%	0.2%	0.0%	0.0%	0.0%	0.1%	0.4%	0.1%	0.1%
33	0	1	3	0	2	4	3	13	0.2%	0.3%	0.5%	0.0%	0.3%	0.7%	0.9%	0.3%	0.3%
32	5	2	5	4	6	7	9	38	1.1%	0.6%	1.3%	0.6%	1.1%	1.6%	2.2%	0.8%	0.8%
31	6	8	4	6	11	10	10	55	2.2%	1.9%	2.0%	1.5%	2.7%	3.0%	3.7%	1.2%	1.2%
30	11	8	16	14	16	35	18	118	4.3%	3.1%	4.7%	3.5%	5.0%	7.8%	6.3%	2.6%	2.6%
29	18	24	25	20	26	25	28	166	7.7%	6.8%	8.8%	6.4%	8.7%	11.2%	10.4%	3.6%	3.6%
28	23	23	34	41	43	54	51	269	12.0%	10.3%	14.5%	12.4%	14.9%	18.5%	17.9%	5.9%	5.9%
27	25	34	38	50	42	59	47	295	16.6%	15.6%	20.9%	19.7%	20.9%	26.5%	24.8%	6.4%	6.4%
26	30	39	47	55	54	61	50	336	22.2%	21.6%	28.7%	27.7%	28.7%	34.8%	32.1%	7.3%	7.3%
25	38	56	52	58	64	60	71	399	29.3%	30.2%	37.4%	36.2%	37.8%	43.0%	42.5%	8.7%	8.7%
24	44	76	60	71	58	81	71	461	37.6%	42.0%	47.4%	46.5%	46.1%	54.0%	52.9%	10.1%	10.1%
23	36	57	43	51	63	78	72	400	44.3%	50.8%	54.6%	53.9%	55.2%	64.6%	63.5%	8.7%	8.7%
22	43	57	62	69	81	72	65	449	52.3%	59.6%	64.9%	64.0%	66.8%	74.4%	73.0%	9.8%	9.8%
21	55	63	39	84	95	63	69	468	62.6%	69.3%	71.5%	76.2%	80.4%	83.0%	83.1%	10.2%	10.2%
20	62	50	64	55	48	55	49	383	74.2%	77.0%	82.1%	84.3%	87.2%	90.5%	90.3%	8.4%	8.4%
19	49	53	49	50	40	45	48	334	83.4%	85.2%	90.3%	91.5%	93.0%	96.6%	97.4%	7.3%	7.3%
18	29	34	18	32	33	12	7	165	88.8%	90.4%	93.3%	96.2%	97.7%	98.2%	98.4%	3.6%	3.6%
17	19	19	12	5	4	3	3	65	92.3%	93.4%	95.3%	96.9%	98.3%	98.6%	98.8%	1.4%	1.4%
16	8	6	11	3	3	1	1	33	93.8%	94.3%	97.2%	97.4%	98.7%	98.8%	99.0%	0.7%	0.7%
15	7	2	2	3	0	0	1	15	95.1%	94.6%	97.5%	97.8%	98.7%	98.8%	99.1%	0.3%	0.3%
14	3	0	0	0	0	0	0	3	95.7%	94.6%	97.5%	97.8%	98.7%	98.8%	99.1%	0.1%	0.1%
13	1	1	0	0	0	0	0	2	95.9%	94.8%	97.5%	97.8%	98.7%	98.8%	99.1%	0.0%	0.0%
12	0	0	0	0	0	0	0	0	95.9%	94.8%	97.5%	97.8%	98.7%	98.8%	99.1%	0.0%	0.0%
11	0	0	0	0	0	0	0	0	95.9%	94.8%	97.5%	97.8%	98.7%	98.8%	99.1%	0.0%	0.0%
1-10	0	0	0	0	0	0	0	0	95.9%	94.8%	97.5%	97.8%	98.7%	98.8%	99.1%	0.0%	0.0%
<b>Total ACT Scores</b>	<b>513</b>	<b>614</b>	<b>584</b>	<b>671</b>	<b>689</b>	<b>726</b>	<b>676</b>	<b>4,473</b>	<b>95.9%</b>	<b>94.8%</b>	<b>97.5%</b>	<b>97.8%</b>	<b>98.7%</b>	<b>98.8%</b>	<b>99.1%</b>	<b>97.6%</b>	
ASSET/Compass/SAT <sup>+</sup>	22	34	15	15	9	9	6	110	4.1%	5.2%	2.5%	2.2%	1.3%	1.2%	0.9%	2.4%	
<b>Total First-Time Freshmen</b>	<b>535</b>	<b>648</b>	<b>599</b>	<b>686</b>	<b>698</b>	<b>735</b>	<b>682</b>	<b>4,583</b>	<b>Percentile Rank</b>								
<b>ASUJ ACT Composite Average</b>	<b>22.6</b>	<b>22.9</b>	<b>23.4</b>	<b>23.3</b>	<b>23.5</b>	<b>24.2</b>	<b>24.1</b>		<b>75th</b>	<b>25</b>	<b>25</b>	<b>26</b>	<b>26</b>	<b>26</b>	<b>27</b>	<b>26</b>	
									<b>50th</b>	<b>22</b>	<b>23</b>	<b>23</b>	<b>23</b>	<b>23</b>	<b>24</b>	<b>24</b>	
<b>Average High School GPA</b>	<b>3.42</b>	<b>3.45</b>	<b>3.48</b>	<b>3.50</b>	<b>3.57</b>	<b>3.61</b>	<b>3.62</b>		<b>25th</b>	<b>20</b>	<b>20</b>	<b>20</b>	<b>21</b>	<b>21</b>	<b>22</b>	<b>21</b>	

<sup>+</sup>Includes students without test scores.

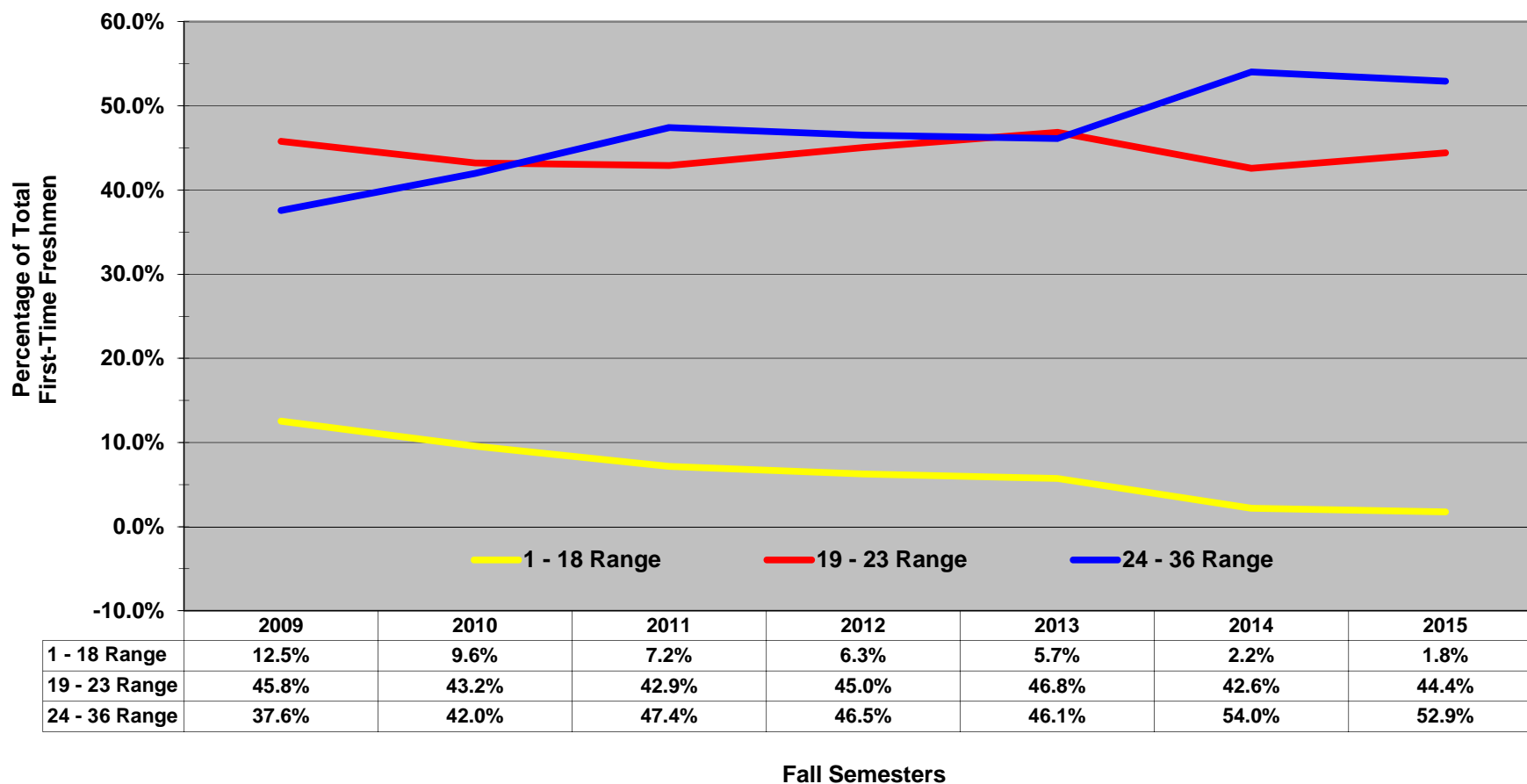
Disclaimer: It is important to note that the information in this profile may differ from data reported by the Office of Institutional Research & Planning to other federal, state, and regional agencies due to differences in reporting guidelines, reporting definitions, and the timing of when the information was prepared. Analysis prepared by the Office of Institutional Research & Planning.

# Historical Fall ACT Composite Scores - White Females

Arkansas State University

## Proportion of Fall First-Time Freshmen by ACT Composite Score Ranges

Jonesboro Campus



NOTE: Students who did not submit ACT scores are not represented.

Disclaimer: It is important to note that the information in this profile may differ from data reported by the Office of Institutional Research & Planning to other federal, state, and regional agencies due to differences in reporting guidelines, reporting definitions, and the timing of when the information was prepared. Analysis prepared by the Office of Institutional Research & Planning.

# Historical Fall ACT Composite Scores - White Males

Arkansas State University

## Number of Fall First-Time Freshmen by ACT Composite Scores

Jonesboro Campus

ACT Test Scores	Fall Semesters							2009-2015 Cumulative Total	Cumulative % of Total							2009-2015 % of Total
	2009	2010	2011	2012	2013	2014	2015		2009	2010	2011	2012	2013	2014	2015	
Above State Standards	36	0	0	0	0	0	0	0	0.0%	0.0%	0.0%	0.0%	0.0%	0.0%	0.0%	0.0%
	35	0	0	0	0	0	0	0	0.0%	0.0%	0.0%	0.0%	0.0%	0.0%	0.0%	0.0%
	34	0	1	0	2	0	2	0	5	0.0%	0.2%	0.0%	0.4%	0.0%	0.3%	0.0%
	33	1	0	4	2	2	4	0	13	0.2%	0.2%	0.8%	0.8%	0.4%	1.0%	0.0%
	32	3	3	4	4	4	13	6	37	0.8%	0.7%	1.5%	1.5%	1.1%	3.2%	1.1%
	31	10	8	12	12	12	15	12	81	2.8%	2.2%	3.9%	3.8%	3.4%	5.7%	3.3%
	30	14	16	19	11	15	34	24	133	5.6%	5.1%	7.5%	5.8%	6.2%	11.4%	7.8%
	29	30	17	14	18	27	22	32	160	11.6%	8.2%	10.2%	9.2%	11.3%	15.0%	13.7%
	28	24	29	28	28	40	42	29	220	16.5%	13.5%	15.6%	14.4%	18.8%	22.0%	19.0%
	27	19	36	37	43	45	45	59	284	20.3%	20.1%	22.8%	22.5%	27.3%	29.5%	29.9%
	26	31	32	44	46	53	53	41	300	26.5%	25.9%	31.3%	31.1%	37.2%	38.4%	37.5%
	25	48	45	45	40	49	52	37	316	36.1%	34.1%	40.0%	38.6%	46.4%	47.1%	44.4%
	24	45	47	52	59	45	55	55	358	45.2%	42.7%	50.0%	49.7%	54.9%	56.3%	54.5%
	23	29	44	40	53	44	54	51	315	51.0%	50.7%	57.7%	59.7%	63.2%	65.3%	64.0%
Below State Standards	22	37	48	44	43	50	57	341	58.4%	59.5%	66.2%	67.7%	72.6%	75.6%	74.5%	
	21	41	56	42	70	43	49	346	66.7%	69.7%	74.3%	80.9%	80.6%	83.8%	82.8%	
	20	44	48	40	33	32	30	38	265	75.5%	78.5%	82.0%	87.1%	86.7%	88.8%	89.8%
	19	36	40	42	26	35	32	36	247	82.7%	85.8%	90.2%	91.9%	93.2%	94.2%	96.5%
	18	22	22	16	21	18	9	5	113	87.1%	89.8%	93.2%	95.9%	96.6%	95.7%	97.4%
	17	27	22	8	2	3	6	4	72	92.6%	93.8%	94.8%	96.2%	97.2%	96.7%	98.2%
	16	9	6	4	2	3	4	1	29	94.4%	94.9%	95.6%	96.6%	97.7%	97.3%	98.3%
	15	3	2	1	1	2	1	1	11	95.0%	95.3%	95.8%	96.8%	98.1%	97.5%	98.5%
	14	3	2	0	0	1	0	0	6	95.6%	95.6%	95.8%	96.8%	98.3%	97.5%	98.5%
	13	2	0	0	0	0	0	0	2	96.0%	95.6%	95.8%	96.8%	98.3%	97.5%	98.5%
12	0	0	0	0	0	0	0	0	96.0%	95.6%	95.8%	96.8%	98.3%	97.5%	98.5%	
11	0	0	0	0	0	0	0	0	96.0%	95.6%	95.8%	96.8%	98.3%	97.5%	98.5%	
1-10	0	0	0	0	0	0	0	0	96.0%	95.6%	95.8%	96.8%	98.3%	97.5%	98.5%	
<b>Total ACT Scores</b>	<b>478</b>	<b>524</b>	<b>496</b>	<b>516</b>	<b>523</b>	<b>584</b>	<b>533</b>	<b>3,654</b>	<b>96.0%</b>	<b>95.6%</b>	<b>95.8%</b>	<b>96.8%</b>	<b>98.3%</b>	<b>97.5%</b>	<b>98.5%</b>	<b>96.9%</b>
ASSET/Compass/SAT <sup>+</sup>	20	24	22	17	9	15	8	115	4.0%	4.4%	4.2%	3.2%	1.7%	2.5%	1.5%	3.1%
<b>Total First-Time Freshmen</b>	<b>498</b>	<b>548</b>	<b>518</b>	<b>533</b>	<b>532</b>	<b>599</b>	<b>541</b>	<b>3,769</b>	<b>Percentile Rank</b>							
<b>ASUJ ACT Composite Average</b>	<b>23.1</b>	<b>23.1</b>	<b>23.7</b>	<b>23.8</b>	<b>24.1</b>	<b>24.5</b>	<b>24.3</b>		<b>75th</b>	<b>26</b>	<b>26</b>	<b>26</b>	<b>26</b>	<b>27</b>	<b>27</b>	<b>25</b>
									<b>50th</b>	<b>23</b>	<b>23</b>	<b>24</b>	<b>24</b>	<b>24</b>	<b>23</b>	<b>24</b>
<b>Average High School GPA</b>	<b>3.23</b>	<b>3.26</b>	<b>3.33</b>	<b>3.36</b>	<b>3.40</b>	<b>3.42</b>	<b>3.45</b>		<b>25th</b>	<b>20</b>	<b>20</b>	<b>21</b>	<b>21</b>	<b>21</b>	<b>22</b>	<b>22</b>

<sup>+</sup>Includes students without test scores.

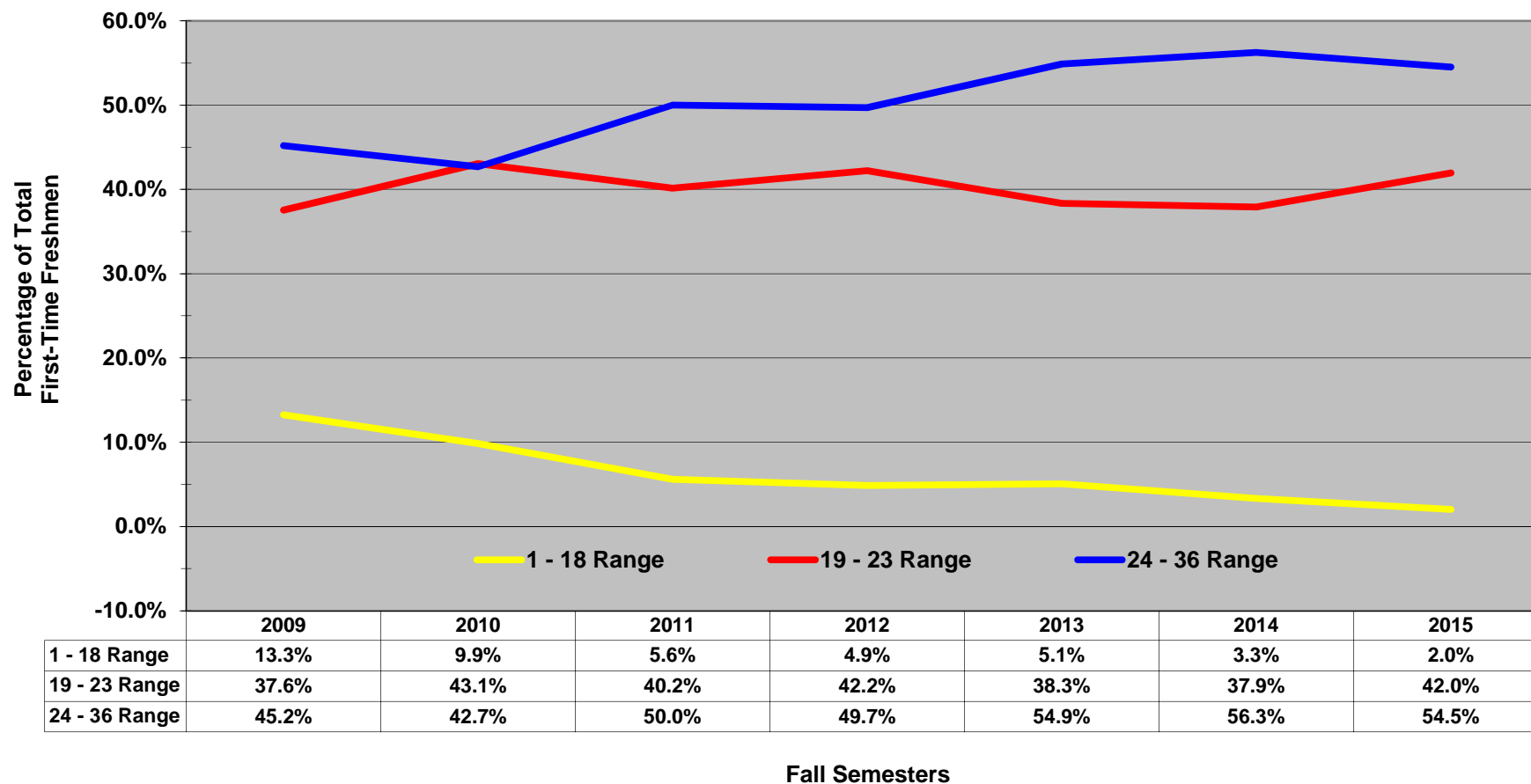
Disclaimer: It is important to note that the information in this profile may differ from data reported by the Office of Institutional Research & Planning to other federal, state, and regional agencies due to differences in reporting guidelines, reporting definitions, and the timing of when the information was prepared. Analysis prepared by the Office of Institutional Research & Planning.

# Historical Fall ACT Composite Scores - White Males

Arkansas State University

## Proportion of Fall First-Time Freshmen by ACT Composite Score Ranges

Jonesboro Campus



NOTE: Students who did not submit ACT scores are not represented.

Disclaimer: It is important to note that the information in this profile may differ from data reported by the Office of Institutional Research & Planning to other federal, state, and regional agencies due to differences in reporting guidelines, reporting definitions, and the timing of when the information was prepared. Analysis prepared by the Office of Institutional Research & Planning.

# Historical Fall ACT Composite Scores - Other Females\*

Arkansas State University

## Number of Fall First-Time Freshmen by ACT Composite Scores

Jonesboro Campus

ACT Test Scores	Fall Semesters							2009-2015 Cumulative Total	% of Total							2009-2015 % of Total	
	2009	2010	2011	2012	2013	2014	2015		2009	2010	2011	2012	2013	2014	2015		
36	0	0	0	0	0	0	0	0	0.0%	0.0%	0.0%	0.0%	0.0%	0.0%	0.0%	0.0%	0.0%
35	0	0	0	0	0	0	0	0	0.0%	0.0%	0.0%	0.0%	0.0%	0.0%	0.0%	0.0%	0.0%
34	0	0	0	0	0	0	0	0	0.0%	0.0%	0.0%	0.0%	0.0%	0.0%	0.0%	0.0%	0.0%
33	0	0	0	0	0	0	1	1	0.0%	0.0%	0.0%	0.0%	0.0%	0.0%	1.5%	0.1%	
32	0	0	1	0	0	0	0	1	0.0%	0.0%	1.2%	0.0%	0.0%	0.0%	1.5%	0.1%	
31	1	0	1	1	1	0	0	4	0.5%	0.0%	2.4%	1.1%	1.3%	0.0%	1.5%	0.6%	
30	2	0	0	0	0	0	4	6	1.6%	0.0%	2.4%	1.1%	1.3%	0.0%	7.5%	0.9%	
29	3	1	0	0	2	2	1	9	3.2%	1.1%	2.4%	1.1%	3.8%	2.4%	9.0%	1.3%	
28	2	0	3	2	5	2	1	15	4.3%	1.1%	6.0%	3.2%	10.3%	4.9%	10.4%	2.2%	
27	5	1	1	4	0	4	2	17	7.0%	2.2%	7.2%	7.5%	10.3%	9.8%	13.4%	2.5%	
26	1	7	1	5	6	6	3	29	7.5%	10.1%	8.4%	12.9%	17.9%	17.1%	17.9%	4.3%	
25	2	8	2	3	0	5	6	26	8.6%	19.1%	10.8%	16.1%	17.9%	23.2%	26.9%	3.8%	
24	7	5	4	7	2	5	4	34	12.4%	24.7%	15.7%	23.7%	20.5%	29.3%	32.8%	5.0%	
23	6	7	7	3	7	6	5	41	15.6%	32.6%	24.1%	26.9%	29.5%	36.6%	40.3%	6.0%	
22	3	2	8	10	8	6	5	42	17.2%	34.8%	33.7%	37.6%	39.7%	43.9%	47.8%	6.2%	
21	4	5	5	5	8	4	4	35	19.4%	40.4%	39.8%	43.0%	50.0%	48.8%	53.7%	5.2%	
20	16	2	8	9	9	8	4	56	28.0%	42.7%	49.4%	52.7%	61.5%	58.5%	59.7%	8.3%	
19	15	4	2	2	4	8	4	39	36.0%	47.2%	51.8%	54.8%	66.7%	68.3%	65.7%	5.8%	
18	15	4	4	5	2	0	0	30	44.1%	51.7%	56.6%	60.2%	69.2%	68.3%	65.7%	4.4%	
17	11	2	4	1	1	1	2	22	50.0%	53.9%	61.4%	61.3%	70.5%	69.5%	68.7%	3.2%	
16	14	3	4	1	1	0	0	23	57.5%	57.3%	66.3%	62.4%	71.8%	69.5%	68.7%	3.4%	
15	10	1	0	1	1	0	0	13	62.9%	58.4%	66.3%	63.4%	73.1%	69.5%	68.7%	1.9%	
14	9	0	0	0	0	0	0	9	67.7%	58.4%	66.3%	63.4%	73.1%	69.5%	68.7%	1.3%	
13	4	0	0	0	0	0	0	4	69.9%	58.4%	66.3%	63.4%	73.1%	69.5%	68.7%	0.6%	
12	3	0	0	0	0	0	0	3	71.5%	58.4%	66.3%	63.4%	73.1%	69.5%	68.7%	0.4%	
11	1	0	0	0	0	0	0	1	72.0%	58.4%	66.3%	63.4%	73.1%	69.5%	68.7%	0.1%	
1-10	0	0	0	0	0	0	0	0	72.0%	58.4%	66.3%	63.4%	73.1%	69.5%	68.7%	0.0%	
<b>Total ACT Scores</b>	<b>134</b>	<b>52</b>	<b>55</b>	<b>59</b>	<b>57</b>	<b>57</b>	<b>46</b>	<b>460</b>	<b>72.0%</b>	<b>58.4%</b>	<b>66.3%</b>	<b>63.4%</b>	<b>73.1%</b>	<b>69.5%</b>	<b>68.7%</b>	<b>67.8%</b>	
ASSET/Compass/SAT <sup>+</sup>	52	37	28	34	21	25	21	218	28.0%	41.6%	33.7%	36.6%	26.9%	30.5%	31.3%	32.2%	
<b>Total First-Time Freshmen</b>	<b>186</b>	<b>89</b>	<b>83</b>	<b>93</b>	<b>78</b>	<b>82</b>	<b>67</b>	<b>678</b>	<b>Percentile Rank</b>								
<b>ASUJ ACT Composite Average</b>	<b>19.1</b>	<b>22.2</b>	<b>21.6</b>	<b>22.3</b>	<b>22.4</b>	<b>22.9</b>	<b>23.6</b>	<b>75th</b>	<b>21</b>	<b>25</b>	<b>23</b>	<b>25</b>	<b>24</b>	<b>25</b>	<b>25</b>		
								<b>50th</b>	<b>18</b>	<b>23</b>	<b>22</b>	<b>22</b>	<b>22</b>	<b>23</b>	<b>23</b>		
<b>Average High School GPA</b>	<b>2.94</b>	<b>3.38</b>	<b>3.31</b>	<b>3.39</b>	<b>3.41</b>	<b>3.45</b>	<b>3.58</b>	<b>25th</b>	<b>16</b>	<b>19</b>	<b>20</b>	<b>20</b>	<b>20</b>	<b>20</b>	<b>21</b>		

\*NOTE: Other Females represents all other races besides African Americans and White Americans.

<sup>+</sup>Includes students without test scores.

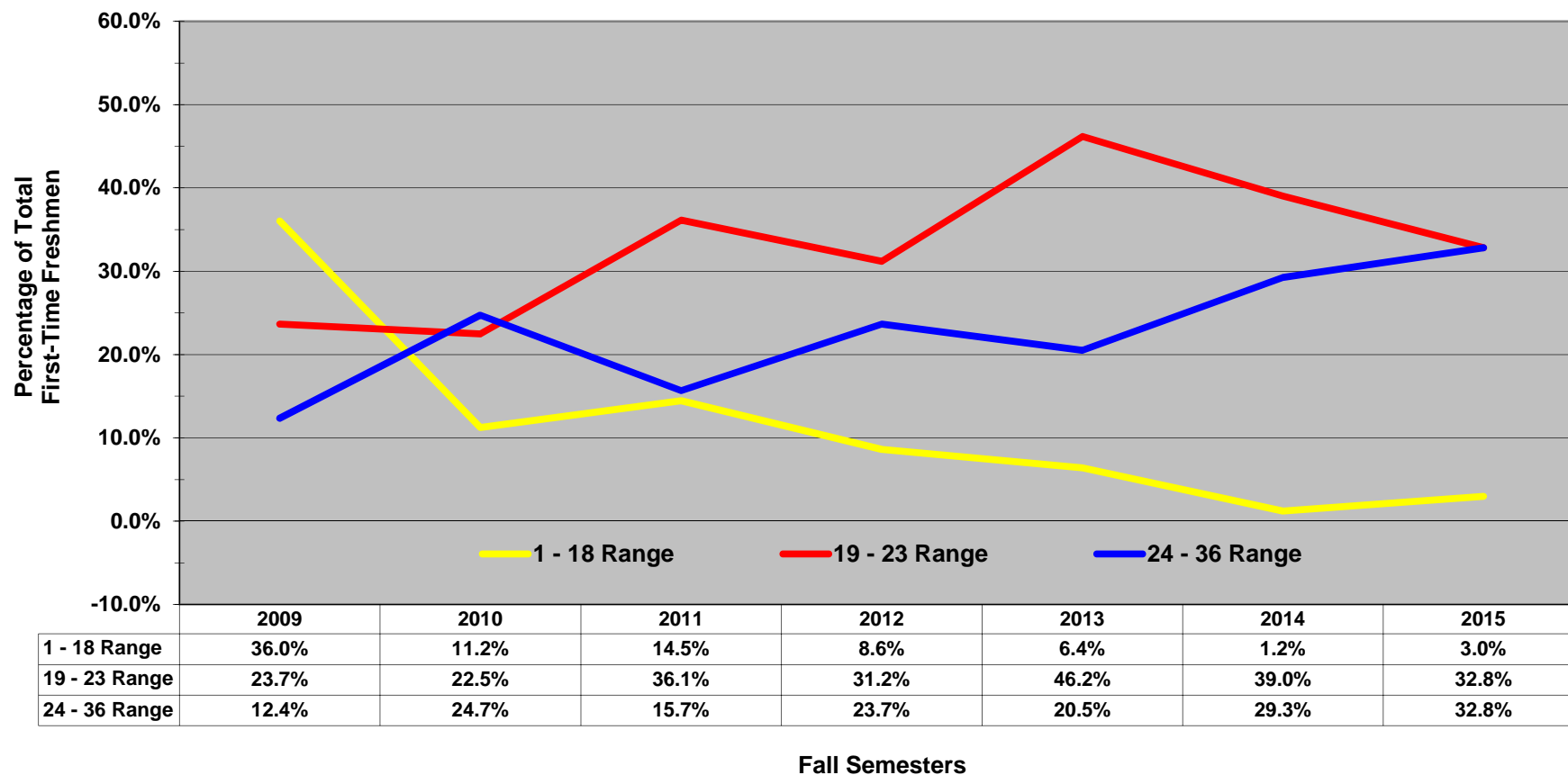
Disclaimer: It is important to note that the information in this profile may differ from data reported by the Office of Institutional Research & Planning to other federal, state, and regional agencies due to differences in reporting guidelines, reporting definitions, and the timing of when the information was prepared. Analysis prepared by the Office of Institutional Research & Planning.

# Historical Fall ACT Composite Scores - Other Females\*

Arkansas State University

## Proportion of Fall First-Time Freshmen by ACT Composite Score Ranges

Jonesboro Campus



\*NOTE: Other Females represents all other races besides African Americans and White Americans.

Disclaimer: It is important to note that the information in this profile may differ from data reported by the Office of Institutional Research & Planning to other federal, state, and regional agencies due to differences in reporting guidelines, reporting definitions, and the timing of when the information was prepared. Analysis prepared by the Office of Institutional Research & Planning.

# Historical Fall ACT Composite Scores - Other Males\*

Arkansas State University

## Number of Fall First-Time Freshmen by ACT Composite Scores

Jonesboro Campus

ACT Test Scores	Fall Semesters							2009-2015 Cumulative Total	Cumulative % of Total							2009-2015 % of Total	
	2009	2010	2011	2012	2013	2014	2015		2009	2010	2011	2012	2013	2014	2015		
36	0	0	0	0	0	0	0	0	0.0%	0.0%	0.0%	0.0%	0.0%	0.0%	0.0%	0.0%	0.0%
35	0	0	0	0	0	0	0	0	0.0%	0.0%	0.0%	0.0%	0.0%	0.0%	0.0%	0.0%	0.0%
34	0	0	0	0	0	0	0	0	0.0%	0.0%	0.0%	0.0%	0.0%	0.0%	0.0%	0.0%	0.0%
33	0	0	0	0	0	0	1	1	0.0%	0.0%	0.0%	0.0%	0.0%	0.0%	0.8%	0.1%	
32	0	0	1	0	0	1	0	2	0.0%	0.0%	0.9%	0.0%	0.0%	1.0%	0.8%	0.2%	
31	0	0	0	0	0	0	2	2	0.0%	0.0%	0.9%	0.0%	0.0%	1.0%	2.4%	0.2%	
30	2	2	0	0	2	2	1	9	1.1%	1.8%	0.9%	0.0%	2.4%	2.9%	3.3%	1.1%	
29	1	1	2	1	0	2	2	9	1.7%	2.7%	2.8%	1.0%	2.4%	4.9%	4.9%	1.1%	
28	1	4	0	1	5	3	2	16	2.3%	6.4%	2.8%	2.0%	8.2%	7.8%	6.5%	2.0%	
27	7	1	1	1	2	2	2	16	6.2%	7.3%	3.7%	3.1%	10.6%	9.8%	8.1%	2.0%	
26	3	0	0	2	1	3	2	11	7.9%	7.3%	3.7%	5.1%	11.8%	12.7%	9.8%	1.4%	
25	4	3	0	1	5	8	6	27	10.2%	10.0%	3.7%	6.1%	17.6%	20.6%	14.6%	3.4%	
24	8	6	6	6	4	7	8	45	14.7%	15.5%	9.3%	12.2%	22.4%	27.5%	21.1%	5.6%	
23	4	7	5	5	2	8	5	36	16.9%	21.8%	14.0%	17.3%	24.7%	35.3%	25.2%	4.5%	
22	7	6	7	8	8	10	5	51	20.9%	27.3%	20.6%	25.5%	34.1%	45.1%	29.3%	6.4%	
21	11	5	1	4	6	4	6	37	27.1%	31.8%	21.5%	29.6%	41.2%	49.0%	34.1%	4.6%	
20	20	6	2	1	6	2	1	38	38.4%	37.3%	23.4%	30.6%	48.2%	51.0%	35.0%	4.7%	
19	8	8	5	6	5	5	6	43	42.9%	44.5%	28.0%	36.7%	54.1%	55.9%	39.8%	5.4%	
18	5	5	3	4	3	3	3	26	45.8%	49.1%	30.8%	40.8%	57.6%	58.8%	42.3%	3.2%	
17	11	0	1	1	0	1	1	15	52.0%	49.1%	31.8%	41.8%	57.6%	59.8%	43.1%	1.9%	
16	12	1	2	0	0	0	1	16	58.8%	50.0%	33.6%	41.8%	57.6%	59.8%	43.9%	2.0%	
15	9	2	1	0	0	0	0	12	63.8%	51.8%	34.6%	41.8%	57.6%	59.8%	43.9%	1.5%	
14	3	0	0	0	0	0	1	4	65.5%	51.8%	34.6%	41.8%	57.6%	59.8%	44.7%	0.5%	
13	2	0	0	0	0	0	0	2	66.7%	51.8%	34.6%	41.8%	57.6%	59.8%	44.7%	0.2%	
12	1	0	0	0	0	0	0	1	67.2%	51.8%	34.6%	41.8%	57.6%	59.8%	44.7%	0.1%	
11	0	0	0	0	0	0	0	0	67.2%	51.8%	34.6%	41.8%	57.6%	59.8%	44.7%	0.0%	
1-10	0	1	0	0	0	0	0	1	67.2%	52.7%	34.6%	41.8%	57.6%	59.8%	44.7%	0.1%	
<b>Total ACT Scores</b>	<b>119</b>	<b>58</b>	<b>37</b>	<b>41</b>	<b>49</b>	<b>61</b>	<b>55</b>	<b>420</b>	<b>67.2%</b>	<b>52.7%</b>	<b>34.6%</b>	<b>41.8%</b>	<b>57.6%</b>	<b>59.8%</b>	<b>44.7%</b>	<b>52.4%</b>	
ASSET/Compass/SAT <sup>+</sup>	58	52	70	57	36	41	68	382	32.8%	47.3%	65.4%	58.2%	42.4%	40.2%	55.3%	47.6%	
<b>Total First-Time Freshmen</b>	<b>177</b>	<b>110</b>	<b>107</b>	<b>98</b>	<b>85</b>	<b>102</b>	<b>123</b>	<b>802</b>	<b>Percentile Rank</b>								
<b>ASUJ ACT Composite Average</b>	<b>20.1</b>	<b>21.8</b>	<b>21.7</b>	<b>22.0</b>	<b>22.8</b>	<b>23.4</b>	<b>23.2</b>	<b>75th</b>	<b>21</b>	<b>24</b>	<b>24</b>	<b>24</b>	<b>25</b>	<b>25</b>	<b>25</b>		
								<b>50th</b>	<b>19</b>	<b>22</b>	<b>22</b>	<b>22</b>	<b>22</b>	<b>23</b>	<b>23</b>		
<b>Average High School GPA</b>	<b>2.88</b>	<b>3.22</b>	<b>3.27</b>	<b>3.17</b>	<b>3.29</b>	<b>3.23</b>	<b>3.39</b>	<b>25th</b>	<b>16</b>	<b>19</b>	<b>19</b>	<b>19</b>	<b>20</b>	<b>21</b>	<b>21</b>		

\*NOTE: Other Males represents all other races besides African Americans and White Americans.

<sup>+</sup>Includes students without test scores.

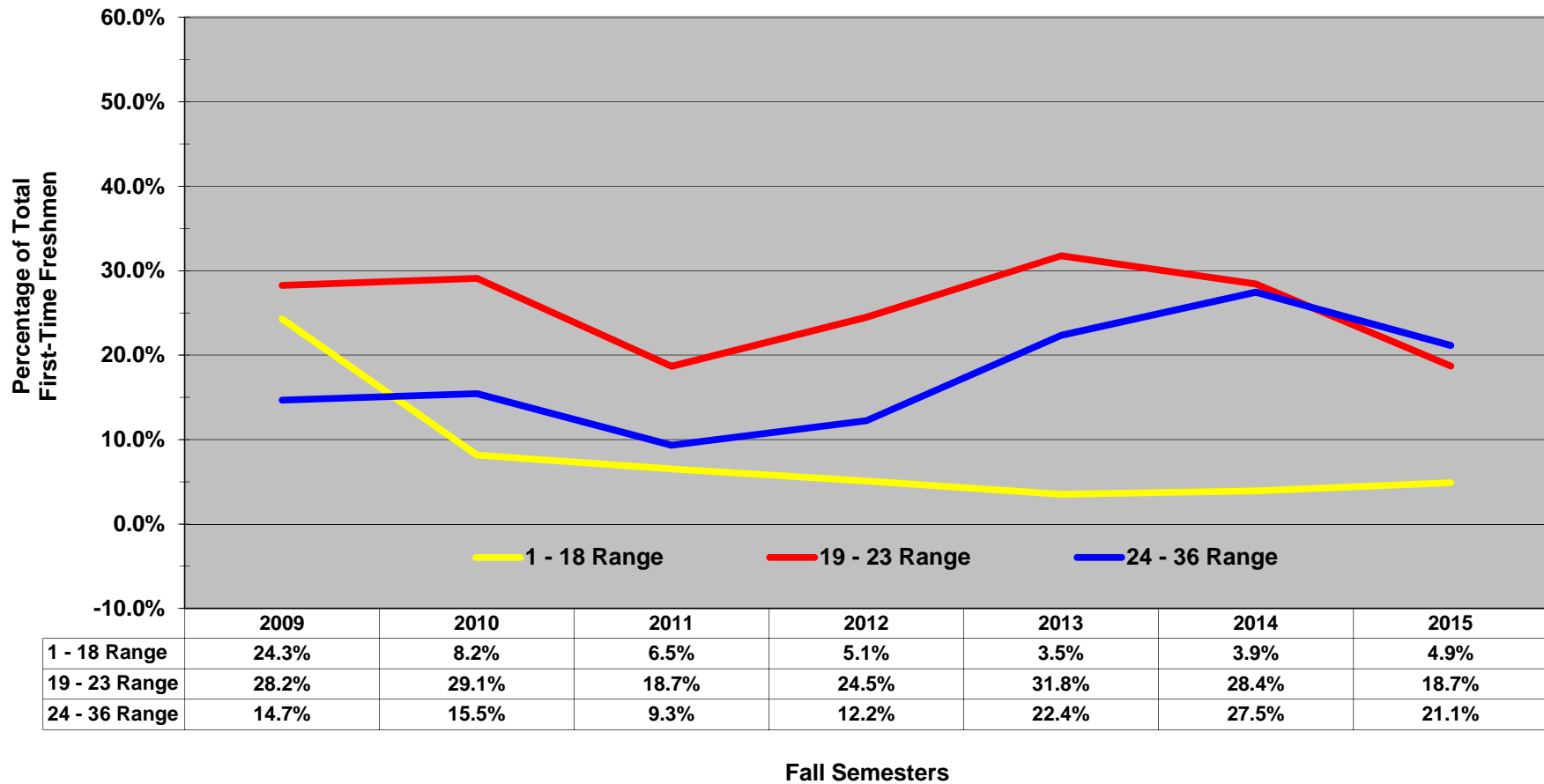
Disclaimer: It is important to note that the information in this profile may differ from data reported by the Office of Institutional Research & Planning to other federal, state, and regional agencies due to differences in reporting guidelines, reporting definitions, and the timing of when the information was prepared. Analysis prepared by the Office of Institutional Research & Planning.

# Historical Fall ACT Composite Scores - Other Males\*

Arkansas State University

## Proportion of Fall First-Time Freshmen by ACT Composite Score Ranges

Jonesboro Campus



\*NOTE: Other Males represents all other races besides African Americans and White Americans.

Disclaimer: It is important to note that the information in this profile may differ from data reported by the Office of Institutional Research & Planning to other federal, state, and regional agencies due to differences in reporting guidelines, reporting definitions, and the timing of when the information was prepared. Analysis prepared by the Office of Institutional Research & Planning.