

MIS 6523  
Spring 2015

To register select  
MIS 6523, SIM  
Predictive Deci-  
sion Making,  
(CRN 13521).

We meet on Wednes-  
days, 2:00-4:50  
p.m. The textbook  
is Simulation Using  
Promodel, 3<sup>rd</sup> ed.,  
Harrell, Ghosh,  
Bowden, McGraw-  
Hill. The textbook  
is available in pa-  
per or electronic.

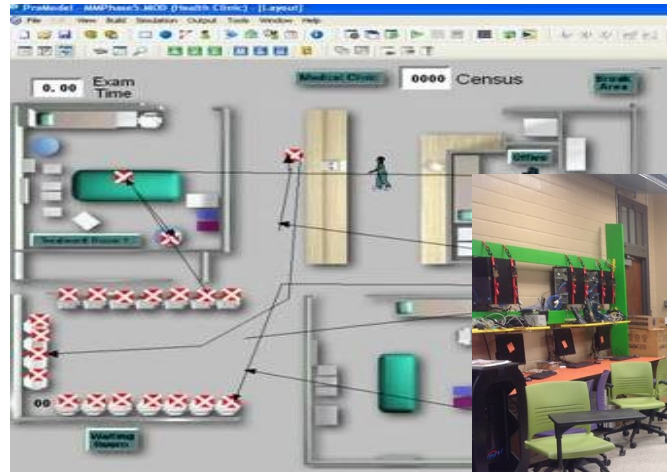
This year we will use  
both Excel and  
graphical modeling  
tools for simulation.

Promodel simulation  
modeling software  
is available in Data  
Automation Lab,  
BU 426.

Online Supplement:  
[www.mhhe.com/  
harrell3e](http://www.mhhe.com/harrell3e); you  
may download and  
install on your com-  
puter a light version  
of the software.

Visit your professor at  
BU 419B or email:  
[moeeni@astate.edu](mailto:moeeni@astate.edu)

# Computer Simulation for Predictive Decision-Making



A Simulation Model  
of a Clinic



Data  
Automation Lab

## Who should take the course?

**Do you** need an elective  
graduate course in the  
MBA program, Engineering  
Management, etc.?

**Are you** imaginative, curious,  
enjoy hands-on experience  
and desire to learn a  
very valuable concept and  
tool that are widely used in  
real world?

**Have you** also had a  
course in statistics? If yes  
to all then this course is for  
you. The course is re-  
quired for the MBA-IS con-  
centration.

## What is it?

*Simulation* is the represen-  
tation of real-world scenari-  
os that are uncertain and  
have components with com-  
plex interactions such as  
medical facilities, production  
facilities, supply chains, traf-  
fic, airports, stock markets,  
amusement parks, etc. on a  
computer in order to ana-  
lyze and predict their behav-  
ior over time for better deci-  
sion making.

This hands-on class will  
meet in the *Data Automation  
Lab*, College of Business.