



ARKANSAS STATE
UNIVERSITY

Join *the* Pack **WOLVES UP!**

Welcome to A-State

EVERY RED WOLF COUNTS

All of us at Arkansas State University are working toward the same goal – creating a nurturing, engaging home for individuals aspiring to higher education goals. Whether undergraduate or graduate, traditional or returning student, on-campus or online, we want every person who joins the Red Wolves pack to succeed. I feel the same way about the dedicated professionals who choose to work at Arkansas State University.

Whether you are faculty, staff or administration, you are A-State. Nobody picks a university based solely on a pretty campus. Or an outstanding laboratory space. Or a well-stocked library. It is the people who maintain the campus, who mentor students in the labs, and who support our faculty and student research that define a great university.

From its beginnings, Arkansas State has supported this region for its educational needs and provided key leadership in a wide range of subjects. A hallmark of that work is the relationships that students build with their mentors – both faculty and staff – during their time with us. We believe it sets us apart from our peers. That's not just a marketing line – it literally is what hundreds of alumni have said in communications with us over the years.

As the second-largest university in our state, and as a Carnegie Research 2 national doctoral university, we are committed to the expansion of Arkansas State into a place every student in our state and the surrounding

region considers as a potential university. We want to achieve that growth through the smart application of our resources, innovation through public-private partnerships, and aggressive implementation of new approaches to higher education.

I have the privilege of serving as the chancellor at Arkansas State, and my wife, Beth, and I want to encourage you to consider becoming a part of A-State. Jonesboro is a wonderful town filled with great advantages for you. Our local economy is robust, but our cost of living is one of the best in the country. Housing is affordable. For those with young children, we offer a range of quality educational opportunities, and this is a great town to raise a family in.

The community is warm and welcoming. We have a wide range of recreational opportunities, both in the local area and nearby in our neighboring major cities. As you take a look at Arkansas State and our community, if you have any further questions or want to dive deeper into specific subjects in this brochure, don't hesitate to reach out to me. You can email me at Chancellor@AState.edu or you can follow me on social media: @KDamp on Twitter and Facebook.

I hope you get the chance to come to Jonesboro and experience what sets Arkansas State and our local community apart.

Until then, Wolves Up!



A handwritten signature of Kelly Damphousse in red ink. The signature is stylized and cursive, written in a fluid, connected script. It is positioned below the portrait of the Chancellor.

Kelly Damphousse, Chancellor



Join *the Pack* **WOLVES UP!**

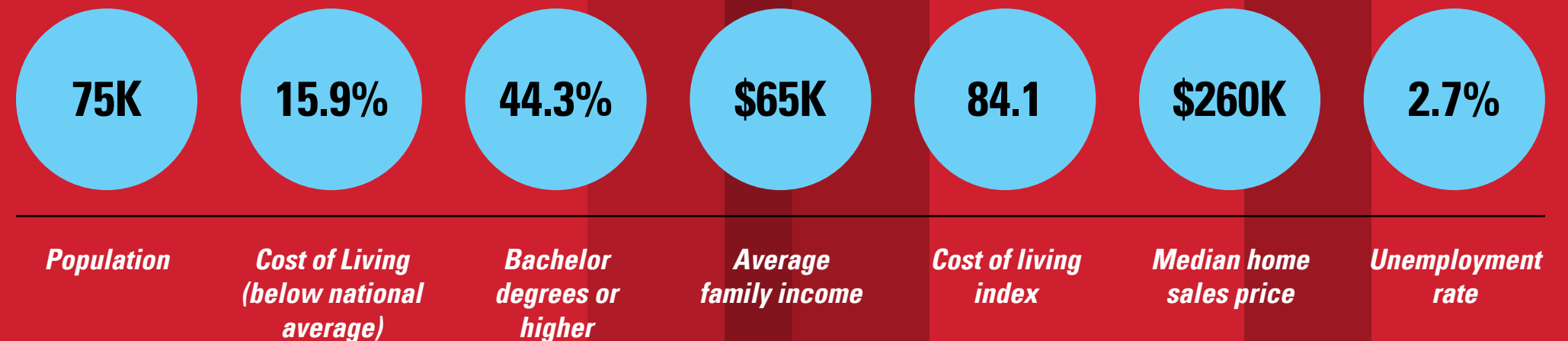
Arkansas State University benefits from its location in one of the state of Arkansas' fastest-growing cities: Jonesboro. As the engine of the Northeast Arkansas economy, Jonesboro is the fifth-largest city in the state and has enjoyed steady population and economic expansion for the past two decades. Combining a warm, Southern hometown feel with the ease of connectivity to three major cities, Jonesboro has welcomed the faculty and staff of A-State into the community.

Featuring a robust group of public school systems, the region's leading health care facilities, and the unique natural features of Crowley's Ridge, Jonesboro is the activity hub of an 18-county area. Not to be overlooked as a key component of Jonesboro is Arkansas State itself: host to the first osteopathic medical school in the state, partner in the first convention center for the city, and home to the region's largest entertainment and cultural venues. From key leadership organizations and governmental agencies, Jonesboro has a new commitment toward leveraging these great institutions into enhancements of quality of life for its residents.

The pace of life in Jonesboro presents an outstanding opportunity for faculty and staff to enjoy family, recreation and community.

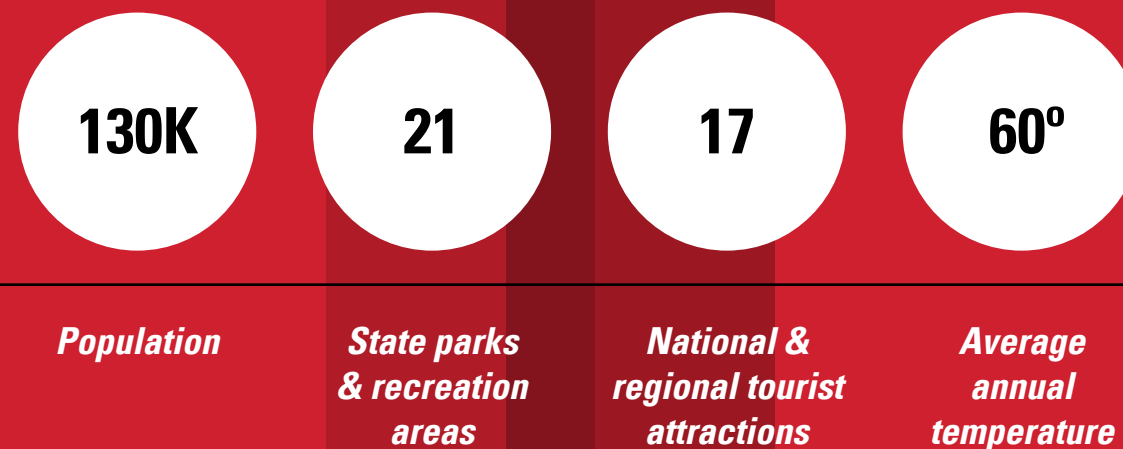
** Data based on 2019 Jonesboro Regional Chamber of Commerce information.*

JONESBORO AT A GLANCE*



AFFORDABILITY + [COMMUNITY, DIVERSITY, AND CULTURE] = HIGH QUALITY OF LIFE

NORTHEAST ARKANSAS AT A GLANCE*



Quick access to Little Rock, Memphis and St. Louis, as well as cities like Dallas and Nashville



A Community *OF NEIGHBORHOODS*

Jonesboro's strength for faculty living comes from a wide diversity of neighborhoods. The activity of mixed-use living in a historic downtown is growing with the addition of new townhouse and loft conversions. The quaint, historic West End is filled with a variety of housing from bungalows to early 20th century stately homes. New loft-style housing is filling the Midtown area just south of downtown. Traditional homes in midtown surround the country club's setting. There is the rolling terrain and wide spaces of Valley View. Limited access areas like RidgePointe or Sage Meadows are available. Plus the nearby bedroom communities of Bay, Bono or Brookland.

An affordable housing market is supported by a cost of living that is 16% below the national average. Thanks to City Water & Light, Jonesboro residents experience energy costs that are significantly below state and regional rates.

Business and shopping districts also abound from the old Fairgrounds area near the center of town to the growing Hilltop area just northeast of the A-State campus. Red Wolf Boulevard and Caraway Road remain vibrant shopping corridors, along with the city's original downtown along Main Street.

** Data based on 2019 Jonesboro Regional Chamber of Commerce information.*

*A housing market that is affordable is supported by a cost of living that is 16% below the national average.**

75K

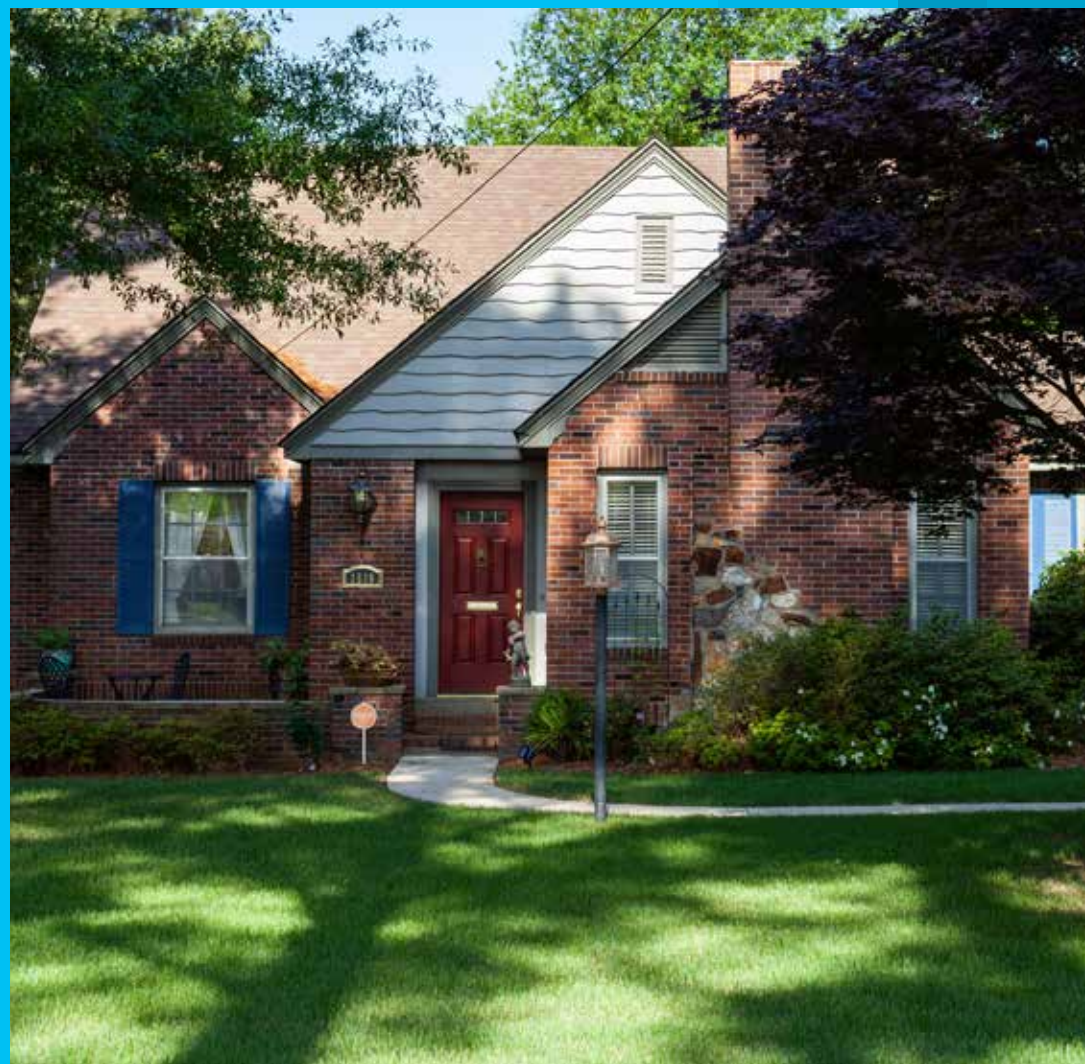
Population

15.9%

*Cost of Living
(below national
average)*

\$260K

*Median home
sales price*





Safe *and* Secure

The Arkansas State University Police Department is accredited through the Commission on Accreditation for Law Enforcement Agencies (CALEA). With this accomplishment, A-State UPD is one of approximately 650 Municipal Law Enforcement agencies in the United States, and one of only seven police departments in Arkansas to achieve this honor.

The Jonesboro Police Department is more than 300 officers strong and conducts a series of community interaction programs ranging from DARE in the local schools, its own Citizens Police Academy, and monthly programs in community centers. The Jonesboro Fire Department holds the nation's highest ISO rating – Class I – which has significant impact upon local insurance costs for homeowners and businesses. With 115 firefighters and 20 units, JFD staffs six stations across the city, including one station adjacent to A-State.

New faculty and staff can learn more about city and county services at the city of Jonesboro's Municipal Center and Craighead County's courthouse – both located within blocks of each other in downtown. Also, Jonesboro City Water & Light (not pictured) will be an early stop to set up utilities.





A Variety of Quality *SCHOOL CHOICES*

Jonesboro is home to five public school districts, each with its own distinctive focus. A system of elementary and middle schools supports a single high school in each district. The largest is Jonesboro, which is organized around magnet elementary schools for specific subject areas such as Health, Wellness and Environmental Studies, Math and Science, Visual and Performing Arts, International Studies and MicroSociety. The next in size is Westside, which incorporates parts of Jonesboro and western Craighead County communities like Bono. Nettleton is the hub of eastern Jonesboro and reflects the flavor of the former community of the same name, which was absorbed into Jonesboro in the late 1950s. Valley View is the youngest district associated with Jonesboro and is located on the southern side of Interstate 555. The neighboring bedroom community of Brookland is one of the fastest growing school districts in the state. Three private schools also operate in Jonesboro: Blessed Sacrament Catholic School, Ridgefield Christian School and Montessori School of Jonesboro.

Along with vibrant extracurricular programs within its school districts, Jonesboro has The Foundation of Arts, a non-profit dance, theatre and art group with numerous youth-oriented programs. The city of Jonesboro's Parks and Recreation Department supports a wide range of youth sports activities within its system of 30-plus locations. The Craighead County-Jonesboro Public Library also hosts both youth and school activities at its main location near downtown.





A *Powerful* Economy

While many areas of the region felt the impact of the downturn in 2008, Jonesboro and Northeast Arkansas' labor force continued to grow and its economy was strengthened. With an industrial base home to diverse industries ranging from the world's leader in conveyor belt technology, Hytrol; one of the largest domestic rice production facilities, Riceland Foods; to major production facilities for international brands like Frito-Lay, Unilever and Nestle; Jonesboro's unemployment rate has consistently stayed near the national low.

In 2017, the labor force grew with the addition of new industries and services, adding over 1,200 new jobs and seeing the unemployment rate drop to 2.7%. According to the local chamber of commerce, more than \$100 million in capital investment was made in Jonesboro during 2017.





Unilever



Great Dane



THE Hub *of Cultural* **ACTIVITY**

As the home of the four largest performance venues for the region, Arkansas State is the center of the arts and entertainment for Northeast Arkansas. Starting with First National Bank Arena, the 13,000-plus seat multi-purpose venue is home to much more than Red Wolves basketball, volleyball and indoor track. National performing artists from Taylor Swift to Rascal Flatts, major touring entertainment like WWE and the Disney family of youth acts, and specialty events including the St. Bernards Health and Wellness Fair and the regional rodeo have graced FNB Arena over the past 30 years.

Located across from FNB Arena, Fowler Center includes Riceland Hall, a 970-seat concert and performance space which is the home to the Delta Symphony Orchestra as well as the A-State Department of Music; the Drama Theatre, a 344-seat venue for plays; the Simpson Theatre, a “black box” experimental performance space; and the Bradbury Art Museum.

Currently in the same area of campus is the recently opened Red Wolf Convention Center, a 40,000-square foot multiuse space, and a new Embassy Suites hotel.

The Arkansas State University Museum is the only on-campus museum in the state, and host to traveling exhibits along with displays of Northeast Arkansas’ natural history and cultural heritage. Downtown Jonesboro is the home of the Forum, a restored mid-20th century theatre. The downtown district also hosts a wide variety of arts and concert festivals, the largest being the fall Downtown BBQ Festival, but also includes annual Christmas and Veterans Day parades and the spring through fall Alive After Five street festivals.





Arkansas State *Heritage Sites*

Originating in work from the A-State Heritage Studies program, the university's Heritage Sites are a collection of five locations across the Delta region. With a mission of preserving the past and providing economic development through tourism, each has a unique connection to the world.

The world-famous Johnny Cash Boyhood Home and Dyess Colony feature a restoration of the home where the multiple Grammy-winning artist grew up during the Great Depression.

The nearby Southern Tenant Farmers Museum in Tyronza, Ark., captures the work of one of the first unions of laborers in the 1920s whose membership and leadership crossed gender and racial lines.

Where *A Farewell to Arms* was composed, the Hemingway-Pfeiffer Museum and Educational Center in Piggott, Ark., celebrates the period when Ernest Hemingway spent time with his wife's family in the upper Delta region of the state.

The Lakeport Plantation near Lake Village, Ark., presents the realities of life within the row-crop culture of the deep Mississippi Delta region.

The V.C. Kays House on the A-State campus is the restored residence of the institution's first president, headquarters for the Heritage Site system, and home to the public displays of the Governor Mike Beebe collection, including a recreation of his capitol office in Little Rock.



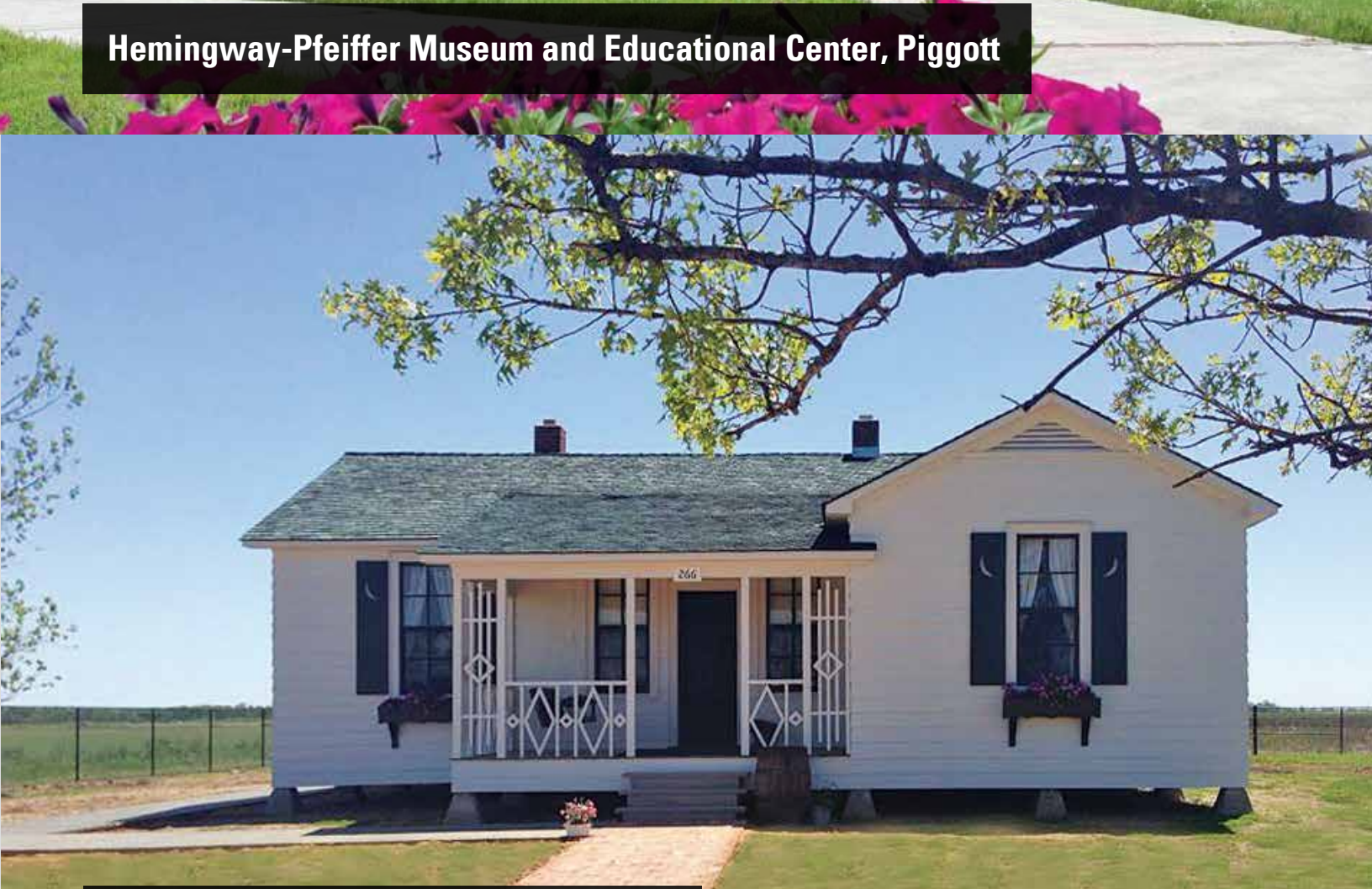
V.C. Kays House, A-State Campus, Jonesboro



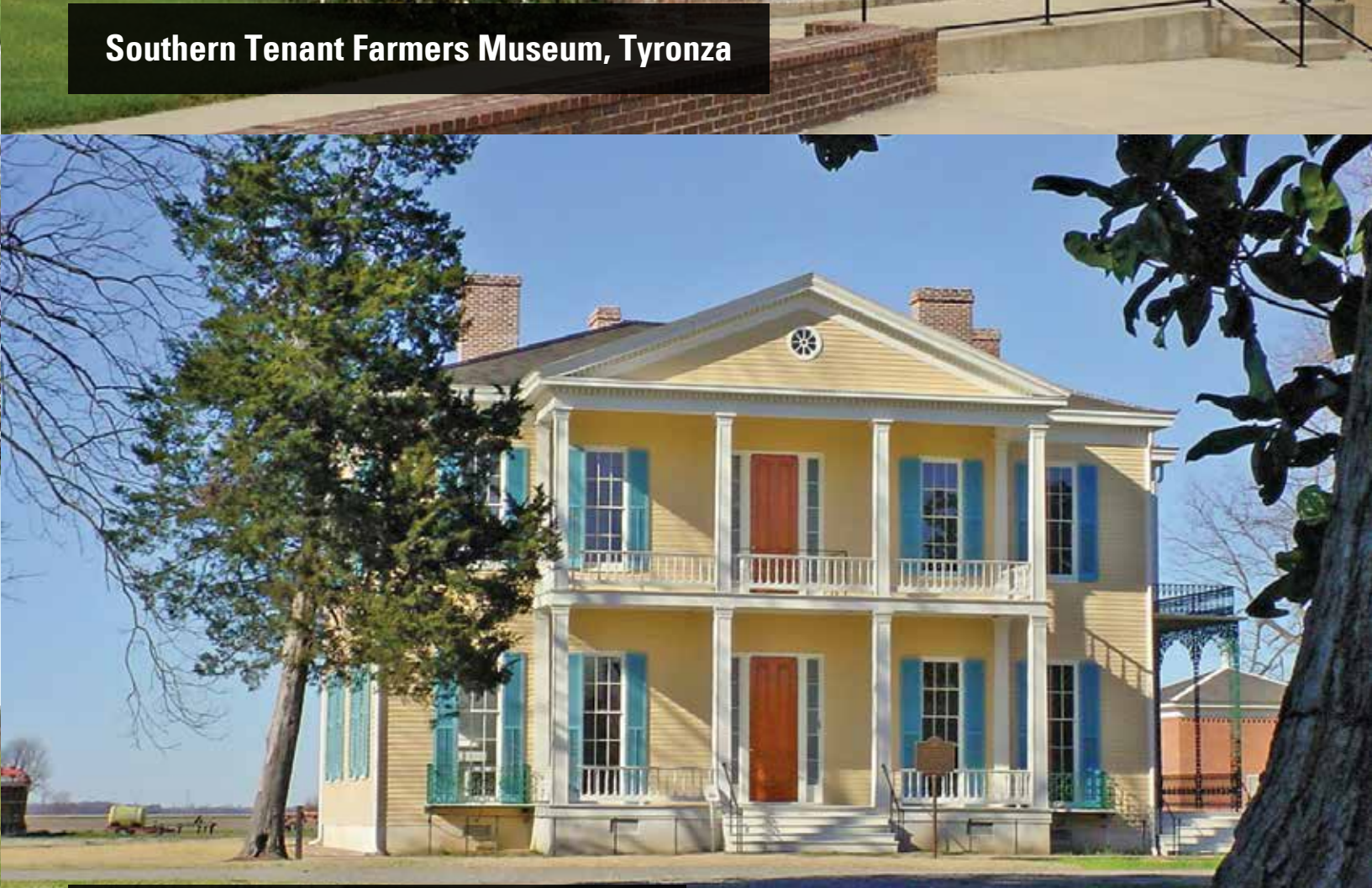
Hemingway-Pfeiffer Museum and Educational Center, Piggott



Southern Tenant Farmers Museum, Tyrnza



Johnny Cash Boyhood Home, Dyess



Lakeport Plantation, Lake Village

Just *a Short Drive* AWAY

Jonesboro's location on Interstate 555 and just a few miles from Future I-57 provide easy, four-lane connectivity to Memphis, Little Rock, St. Louis and beyond.

The attractions of downtown Memphis are less than an hour away, including the FedEx Forum, home to the NBA's Memphis Grizzlies; world-famous Beale Street and its entertainment district; the Orpheum Theatre whose recent Broadway touring schedule included hits like *Hamilton*; and the unique Pyramid Bass Pro Shops location, one of the largest presentations of wildlife, the Ducks Unlimited gallery and a retail location all under a single 14-story roof. American music history is celebrated at Sun Studio, Stax Museum and Graceland. The National Civil Rights Museum at the Lorraine Motel recently marked the 50th anniversary of Dr. Martin Luther King Jr.'s assassination. Triple-A professional baseball and USL professional soccer share AutoZone Park near the historic Peabody Hotel and its world-famous ducks.

Midtown Memphis features the Memphis Zoo, including its famous panda exhibit; the Pink Palace, an arts museum; the Memphis Children's Museum, the Memphis Symphony and Memphis Ballet. Further to the east is the largest urban park in the United States, Shelby Farms, and the shopping districts of suburban Germantown, Tenn. Amtrak's City of New Orleans makes its mid-point stop in Memphis, providing a unique weekend getaway to either Chicago or New Orleans.

The state capital, Little Rock, is just over two hours to the southeast. Along with the River Market entertainment district, anchored by Simmons Bank Arena and the William J. Clinton Presidential Library, there are outdoor attractions like Pinnacle Mountain and the Big Dam Bridge, a world-famous bicycle-pedestrian crossing of the Arkansas River, which is part of a larger 20-plus-mile riverfront trail system.

To the north just over three hours by interstate is St. Louis, with the NHL Blues and Major League Baseball Cardinals, the Gateway Arch, museums, the headquarters of Anheuser-Busch and a major portion of Boeing. St. Louis is also home to one of A-State's partners, the Endangered Species Center, as the university works to assist America's most threatened species, the Red Wolf. Regional airline Air Choice One provides a three-times a day shuttle flight from Jonesboro Regional to Lambert International Airport – bringing the attractions and airport connections of St. Louis even closer.





Diverse *Dining*

White tablecloth or down-home country. National chains or local staples. Cuisines ranging the wide gamut you'd expect in a university town. Jonesboro has what you are hungry for.

Starting near the Arkansas State University campus in Jonesboro's downtown entertainment district, everything from fine dining to pizzeria is available along Main Street. Almost all are locally owned and feature local products. The range is wide in downtown – the eclectic feel of The Recovery Room or The Parsonage, outdoor venues like Porch 30, the mix of live entertainment at Cregeen's, Skinny J's or Brickhouse, and the more upscale Roots or Omar's Uptown.

Along Red Wolf Boulevard, almost every major national restaurant chain has locations, covering everything from Olive Garden to Five Guys to Longhorn Steakhouse. Other notable local or statewide restaurants, including Tacos 4 Life or Slim Chickens, local BBQ favorites like Que 49 and Demo's, are all along Red Wolf. There are also local and national options along Southwest Drive

ranging from Lost Pizza to Outback Steakhouse. Closer to the main campus is a selection of franchise restaurants as well as local favorites including JTown's Grill, Chin Chin Express, Los Arcos and The Yard. Speaking of coffee and dessert, once again, you have your choice – the nationals from Starbucks to Krispy Kreme or the ultra-locals like Shadrach's Coffee Roaster, Andy's Custard or Bliss Cupcakes.

If home cooking – literally – is your thing, Jonesboro has major grocery chains as well as three healthy alternative-based groceries to supply your kitchen.

And if you run out of options in Jonesboro, the downtown Memphis culinary scene is less than one hour away down Interstate 555 and 55.





THE *Great Outdoors*

Starting with one of the largest city parks in the state of Arkansas, Craighead Forest Park, Jonesboro's natural beauty provides ample outdoor activities for families. The jewel of the Parks and Recreation system, the 732-acre park features a recently completed 3.2 mile walking/running hard surface path, a 2.4 mile chat surface running trail along the 60-acre lake open for canoeing, kayaking and fishing, more than 15 miles of mountain bike trails, a disc golf course which recently hosted a professional tour stop, and numerous camping and play areas. Craighead Forest includes RV camping, wooded trails for horses and exploration, and an exclusive area for ATV riding.

Craighead Forest is adjacent to Forrest L. Wood Crowley's Ridge Nature Center, an Arkansas Game and Fish Commission conservation center, which includes an interpretive natural history museum, youth programs and additional nature trails.

Joe Mack Campbell Park and Southside Complex each support a growing youth soccer, football, baseball and softball program. One of the largest Miracle League Parks in the country is located near Southside, providing a first-class recreational area to youth and adult patrons with special needs. With 17 major parks, four community recreation centers and a dozen additional neighborhood pocket parks, almost 1,000 acres of Jonesboro is dedicated to parks and recreation.

Within the city, running events are a staple with the St. Bernards Doc Rock Half Marathon and the Northeast Arkansas Komen Race for the Cure – both hosted by A-State. The region's largest and longest-running cycling events are based in Jonesboro. State parks like Lake Frierson and Crowley's Ridge are less than 30 minutes away. The headwaters of the Buffalo River and White River are nearby. Two unique geographic formations – Crowley's Ridge to the west and the Sunken Lands to the east – define distinct outdoor recreation zones.





Body and Soul

With two major medical complexes, a medical school and a host of support clinics and specialty units, Jonesboro is the center of health care for the more than 130,000 residents of the Northeast Arkansas region. Close to \$1 billion in medical construction keeps Jonesboro a medical services leader in the region.

St. Bernards Medical Center is located near the downtown area, and completed the largest expansion of facilities in its more than 100-year history, a \$350 million project. NEA Baptist opened a \$450 million campus near the Hilltop section of Northeast Jonesboro in 2014. The arrival of the New York Institute of Technology's College of Osteopathic Medicine is providing a much-welcomed influx of new medical professionals. UA Medical Sciences, Arkansas Children's Hospital (Little Rock) and Le Bonheur Children's (Memphis) also maintain clinic facilities in Jonesboro.

During the late 20th century, the city of Jonesboro's motto was the "City of Churches." Faith and family remains a staple of the region, with a great diversity of worship that includes:

African Methodist Episcopal

Anglican

Assembly of God

Baptist

Bible

Catholic

Christian

Christian Methodist Episcopal

Christian Science

Church of Christ

Church of God

Church of Latter-Day Saints

Church of the Nazarene

Episcopalian

Greek Orthodox

Interdenominational

Islam

Jehovah's Witness

Jewish

Lutheran

Messianic

Methodist

Nondenominational

Pentecostal

Presbyterian

Quaker

Seventh Day Adventist

Unitarian

United Church of Christ

Wesleyan







STATE

**ARKANSAS STATE
UNIVERSITY**